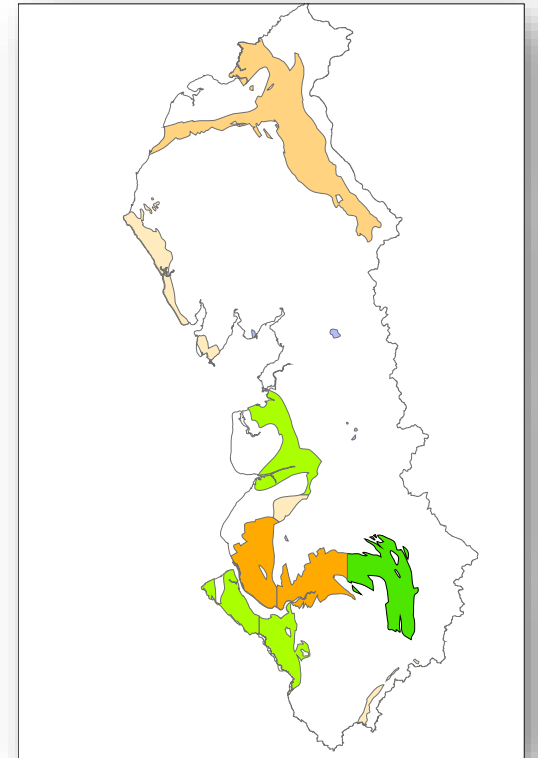




Reflections of a retired hydrogeologist on...

**...the use, management and understanding  
of the Permo-Triassic sandstones  
of north west England.**

*Keith Seymour (vice president for regional groups)*



Reflections of a retired hydrogeologist on  
**the use, management and understanding of the  
Permo-Triassic sandstones of north west England.**



- Introduction – *my credentials*
- Setting the scene – geology and hydrogeology of NW
- History of abstraction
- History of regulation
- Key insights
  - Compartmentalisation
  - Saline intrusion
  - Recharge
- Chalk and cheese: drought and flood responses

# Introduction

1976



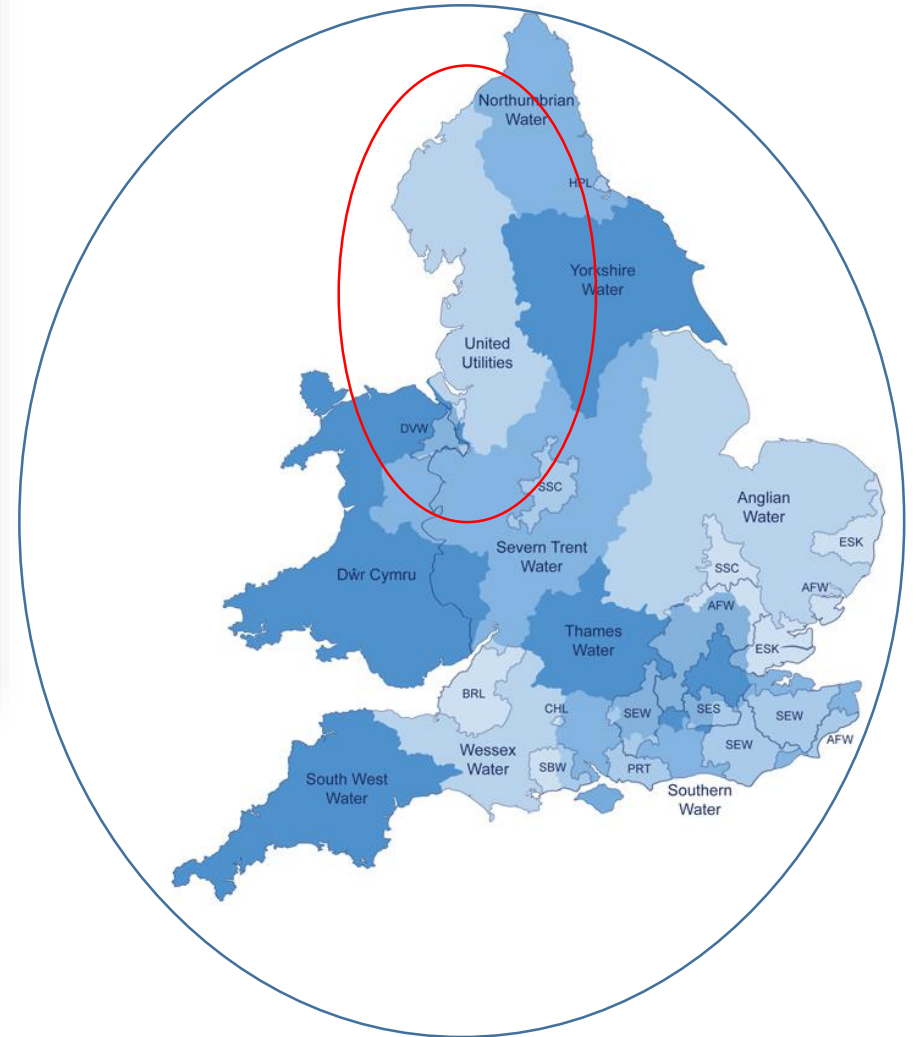
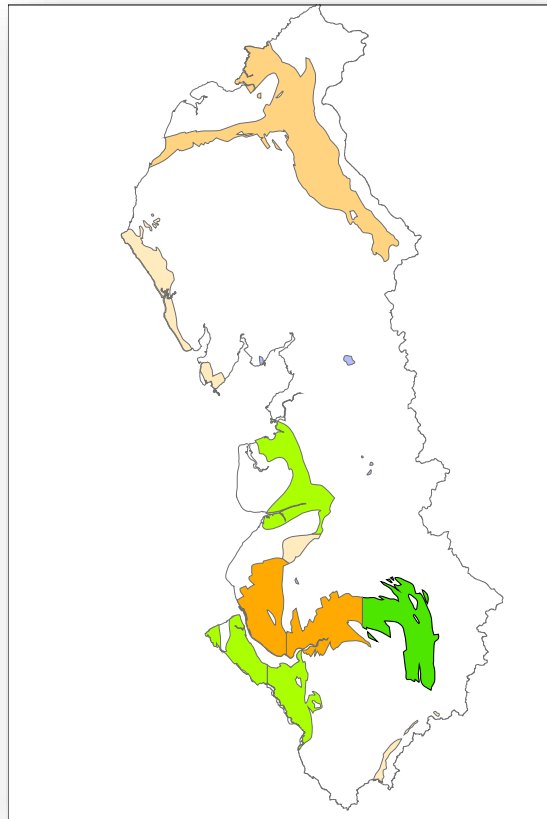
1989



1996

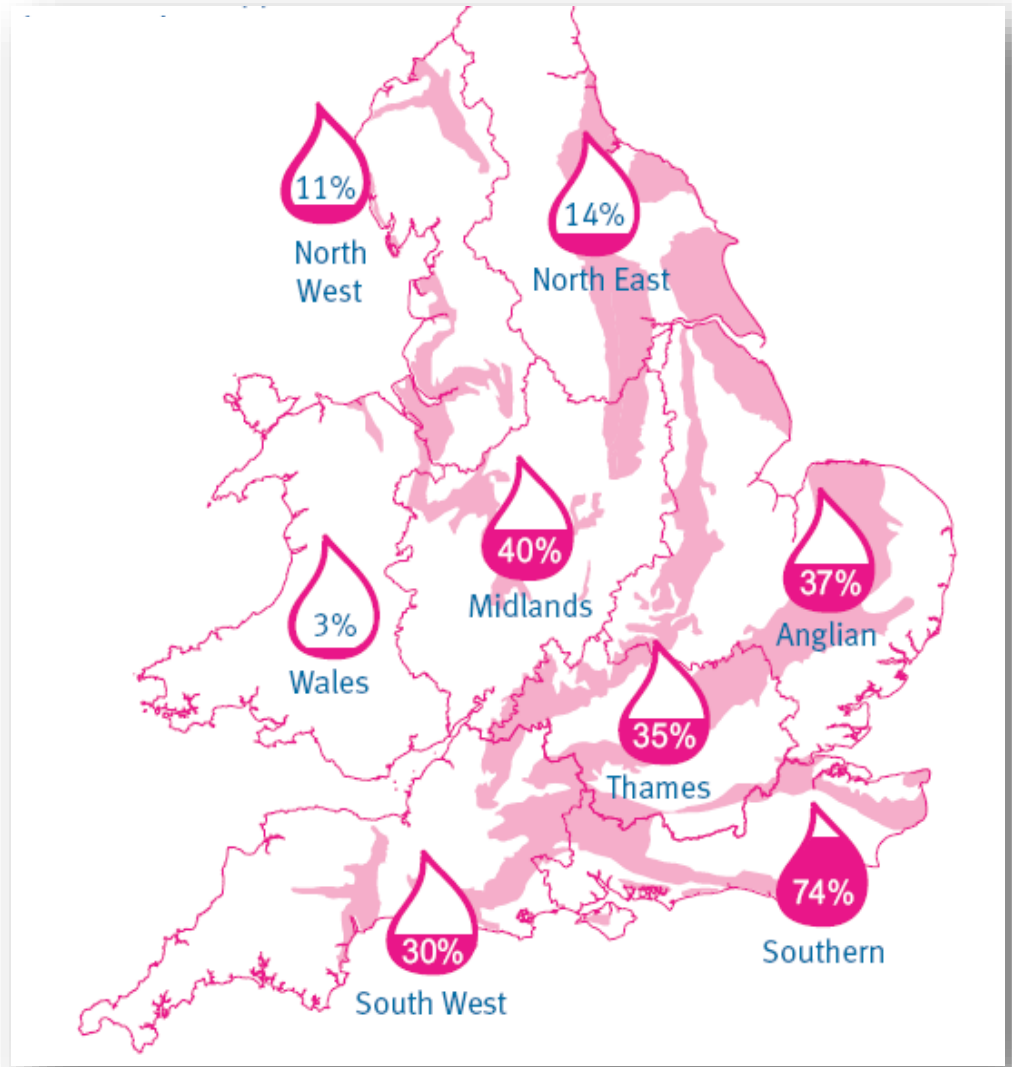
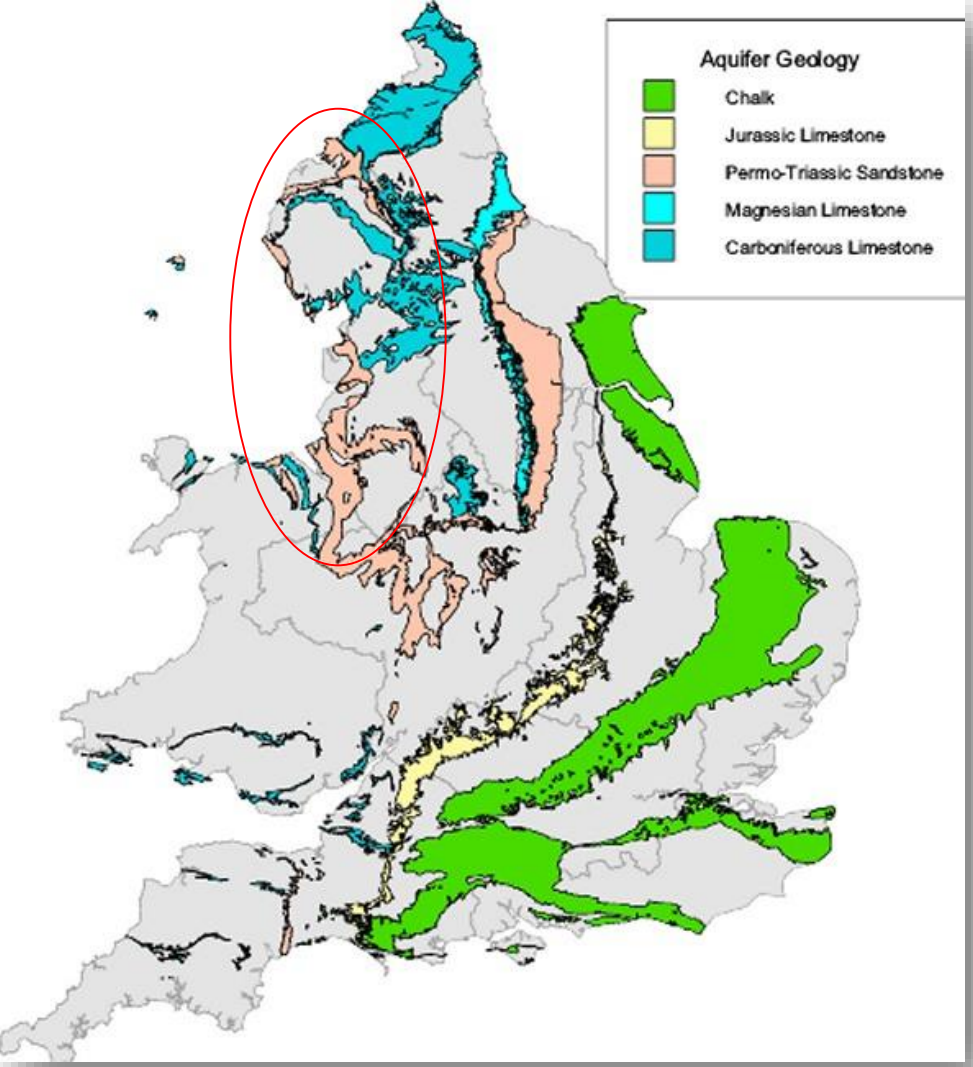


2008/14



'Credentials'

# Our principal aquifers



*~importance for public water supply*

# Why is groundwater only 11% of PWS in the NW?



Weather or not,



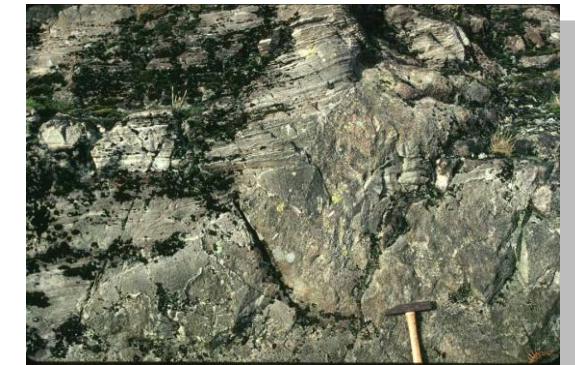
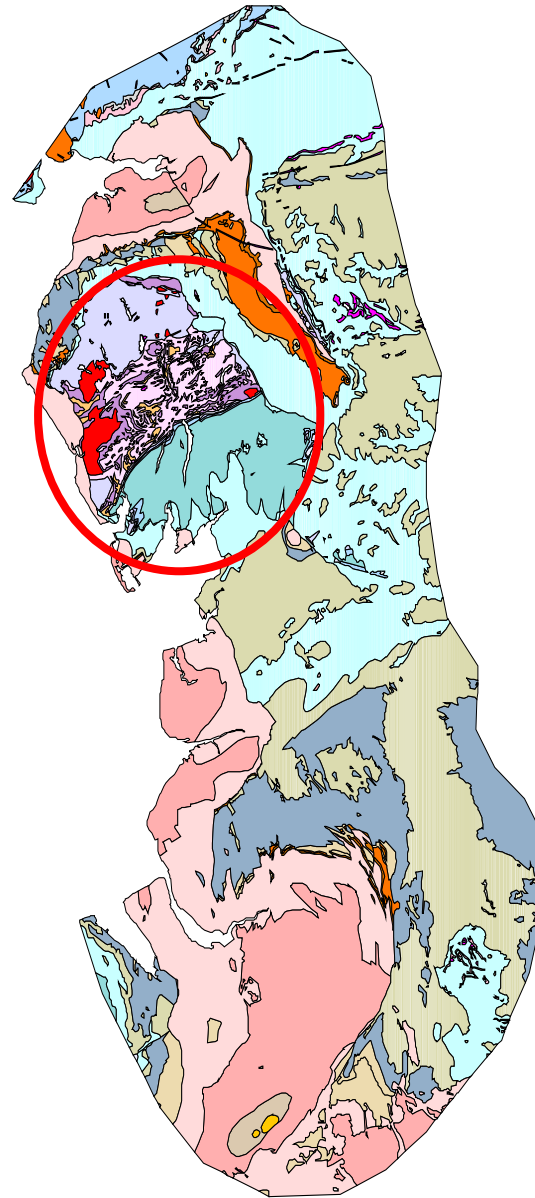
is it a 'geology thing'?

## Setting the scene:

- Geology and hydrogeology of NW

# Geology of NW

ERA		Date*	PERIOD	
<b>CENOZOIC</b>		2.6	QUATERNARY	
		23	NEOGENE	
			PALAEOGENE	
<b>MESOZOIC</b>		65	CRETACEOUS	
		145	JURASSIC	
		199	TRIASSIC	
	<b>PALAEOZOIC</b>		251	PERMIAN
		<b>LATE</b>	299	CARBONIFEROUS
359	DEVONIAN			
416	SILURIAN			
<b>EARLY</b>	443	ORDOVICIAN		
	488	CAMBRIAN		
	542			

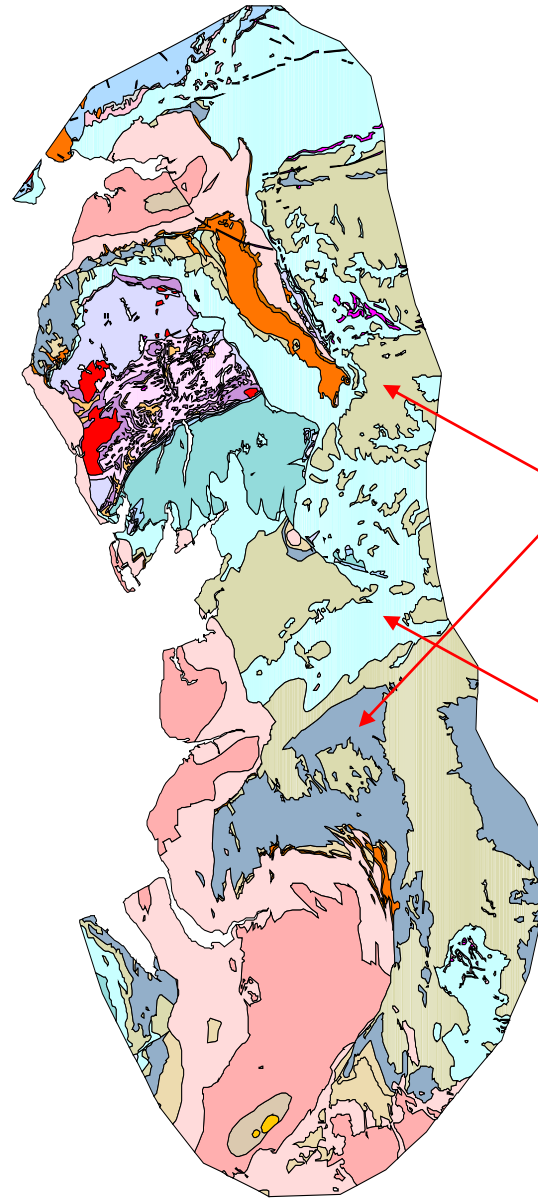


Lower Palaeozoic



# Geology of NW

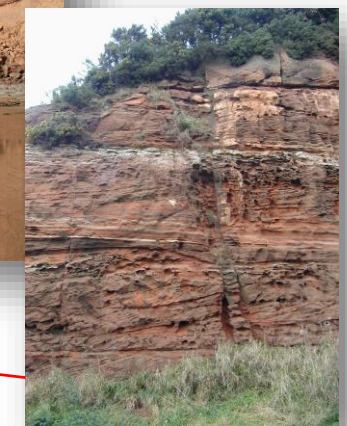
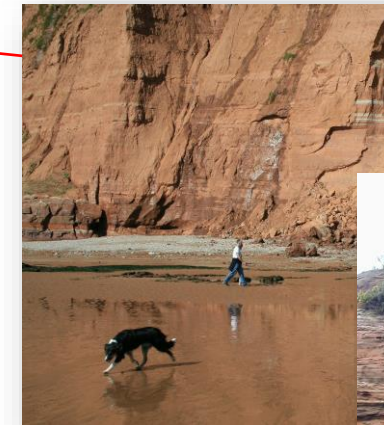
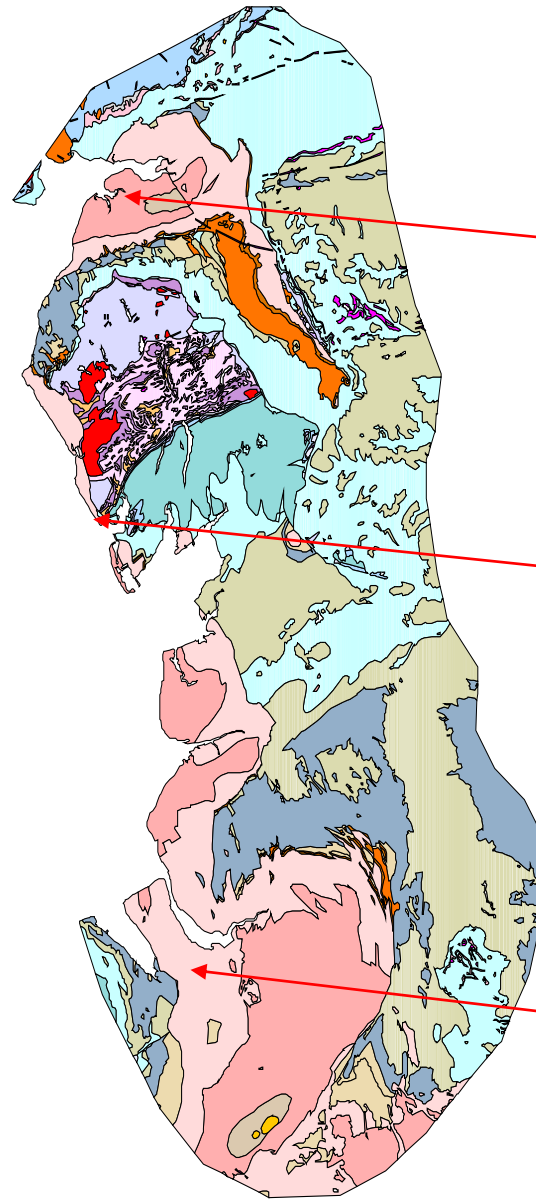
ERA		Date*	PERIOD
<b>CENOZOIC</b>		2.6	QUATERNARY
		23	NEOGENE
		65	PALAEOGENE
<b>MESOZOIC</b>		145	CRETACEOUS
		199	JURASSIC
		251	TRIASSIC
		299	PERMIAN
<b>PALAEOZOIC</b>	<b>LATE</b>	359	<b>CARBONIFEROUS</b>
		416	DEVONIAN
	<b>EARLY</b>	443	SILURIAN
		488	ORDOVICIAN
		542	CAMBRIAN



Carboniferous

# Geology of NW

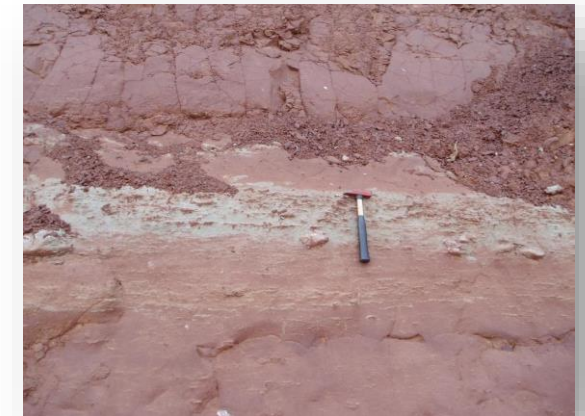
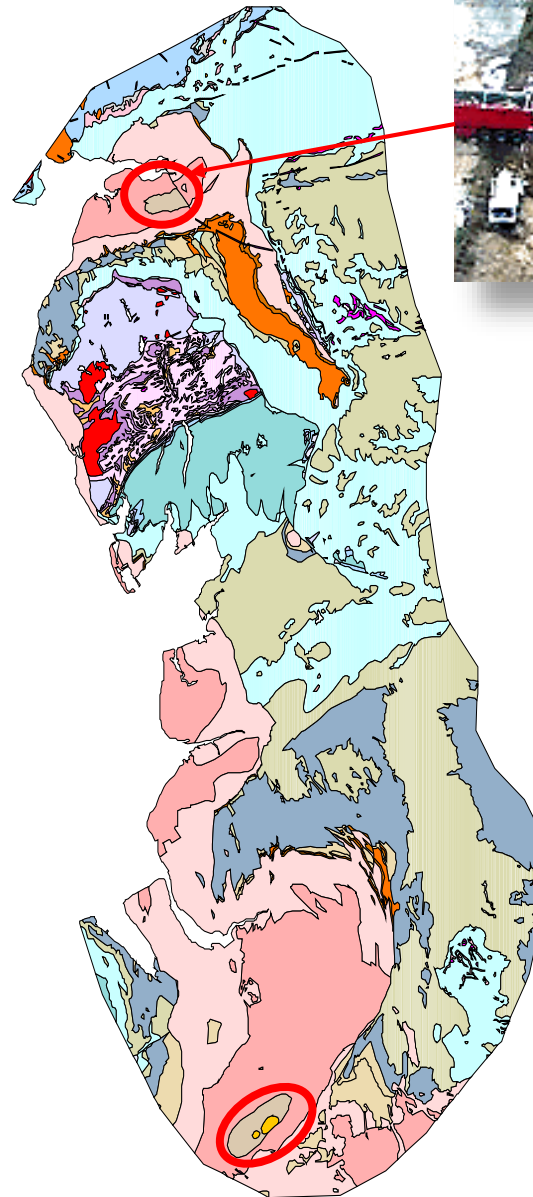
ERA		Date*	PERIOD	
<b>CENOZOIC</b>		2.6	QUATERNARY	
		23	NEOGENE	
		65	PALAEOGENE	
<b>MESOZOIC</b>		145	CRETACEOUS	
		199	JURASSIC	
		251	TRIASSIC	
		299	PERMIAN	
<b>PALAEZOIC</b>	<b>LATE</b>		CARBONIFEROUS	
			359	DEVONIAN
			416	SILURIAN
	<b>EARLY</b>		443	ORDOVICIAN
			488	CAMBRIAN
			542	



Permo- Triassic

# Geology of NW

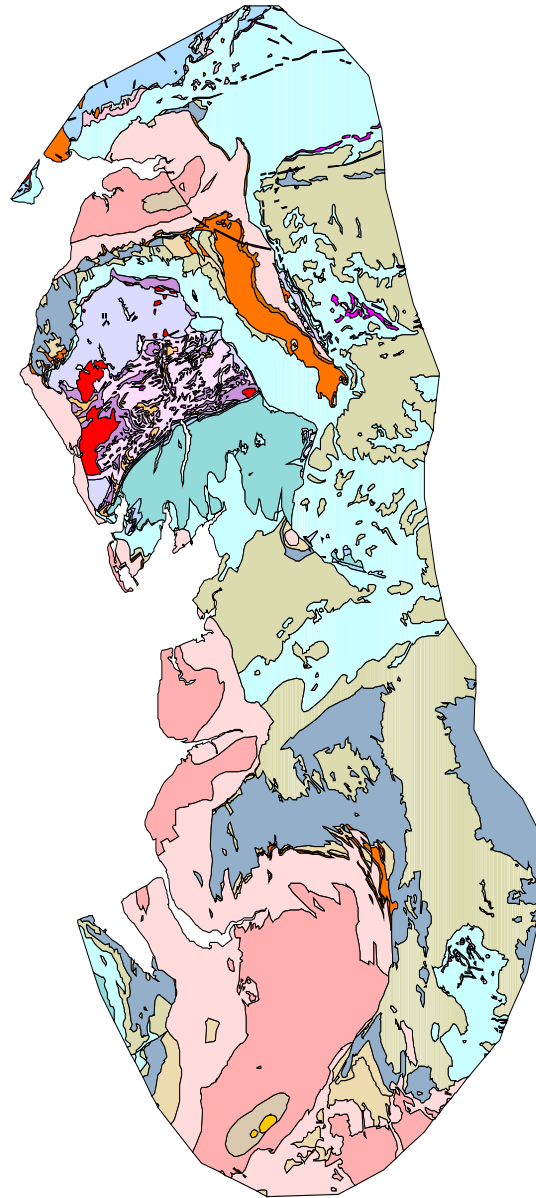
ERA		Date*	PERIOD
<b>CENOZOIC</b>		2.6	QUATERNARY
		23	NEOGENE
		65	PALAEOGENE
<b>MESOZOIC</b>		145	CRETACEOUS
		199	<b>JURASSIC</b>
		251	TRIASSIC
		299	PERMIAN
<b>PALAEZOIC</b>	<b>LATE</b>	359	CARBONIFEROUS
		416	DEVONIAN
		443	SILURIAN
	<b>EARLY</b>	488	ORDOVICIAN
		542	CAMBRIAN



Jurassic (Lias)

# Geology of NW

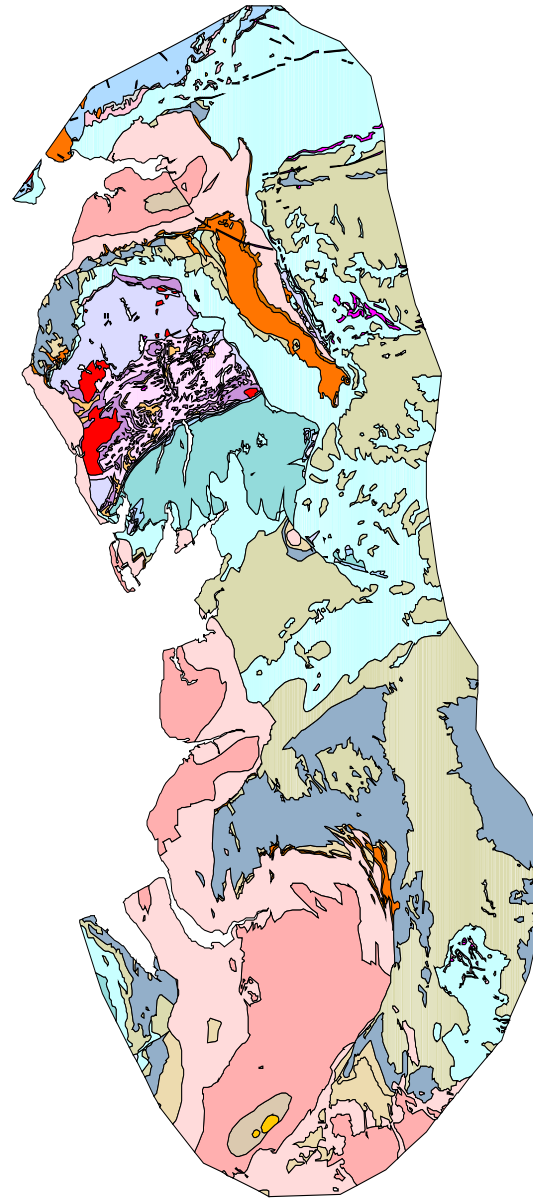
ERA		Date*	PERIOD
<b>CENOZOIC</b>		2.6	QUATERNARY
		23	NEOGENE
		65	PALAEOGENE
<b>MESOZOIC</b>		145	CRETACEOUS
		199	JURASSIC
		251	TRIASSIC
		299	PERMIAN
<b>PALAEOZOIC</b>	<b>LATE</b>	359	CARBONIFEROUS
		416	DEVONIAN
		443	SILURIAN
	<b>EARLY</b>	488	ORDOVICIAN
		542	CAMBRIAN



Cretaceous??

# Geology of NW

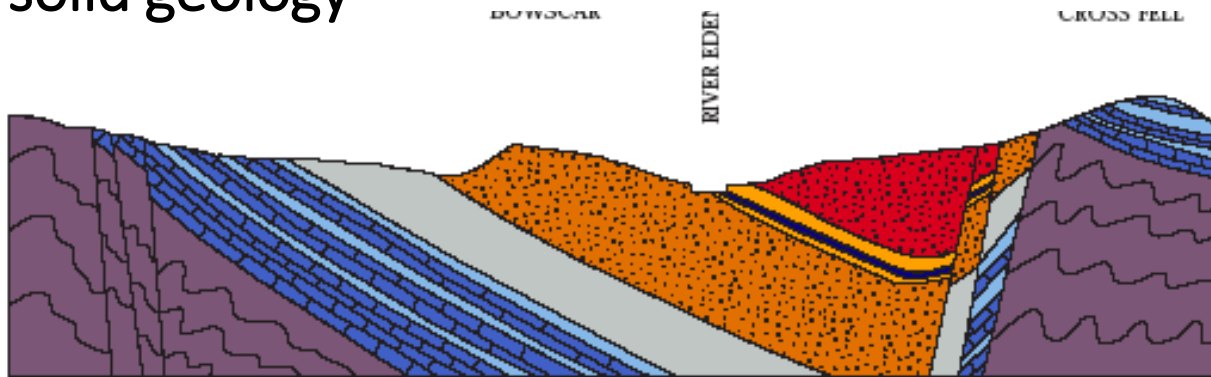
ERA	Date*	PERIOD
<b>CENOZOIC</b>	2.6	<b>QUATERNARY</b>
	23	NEOGENE
		PALAEOGENE
<b>MESOZOIC</b>	65	CRETACEOUS
	145	JURASSIC
	199	TRIASSIC
	251	PERMIAN
	299	CARBONIFEROUS
<b>PALAEOZOIC</b>	359	DEVONIAN
	416	SILURIAN
	443	ORDOVICIAN
	488	CAMBRIAN
	542	
		<b>LATE</b>
		<b>EARLY</b>









Quaternary  
(Superficial/Drift)

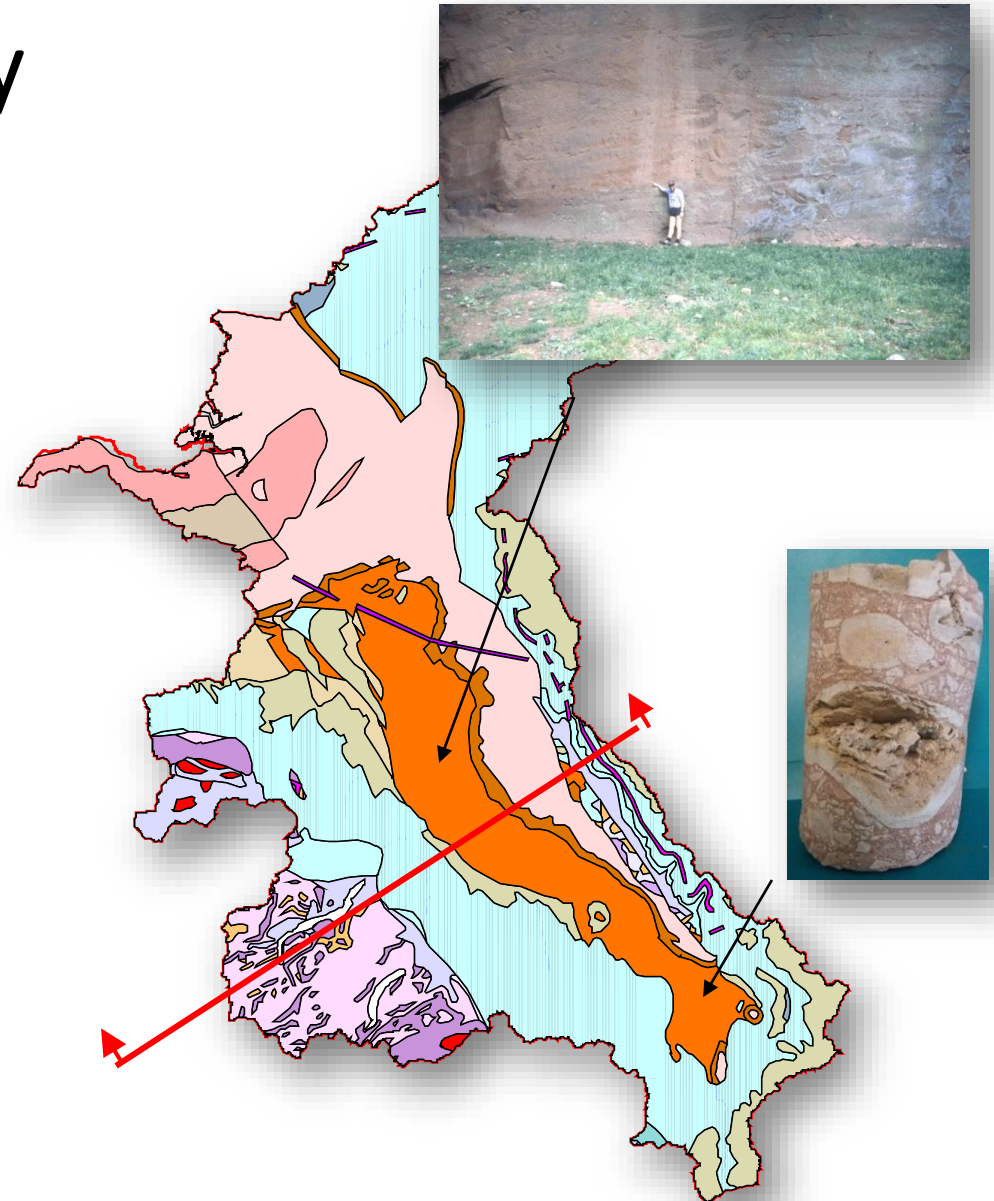
# Basin deposition : The Eden Valley

solid geology



Legend

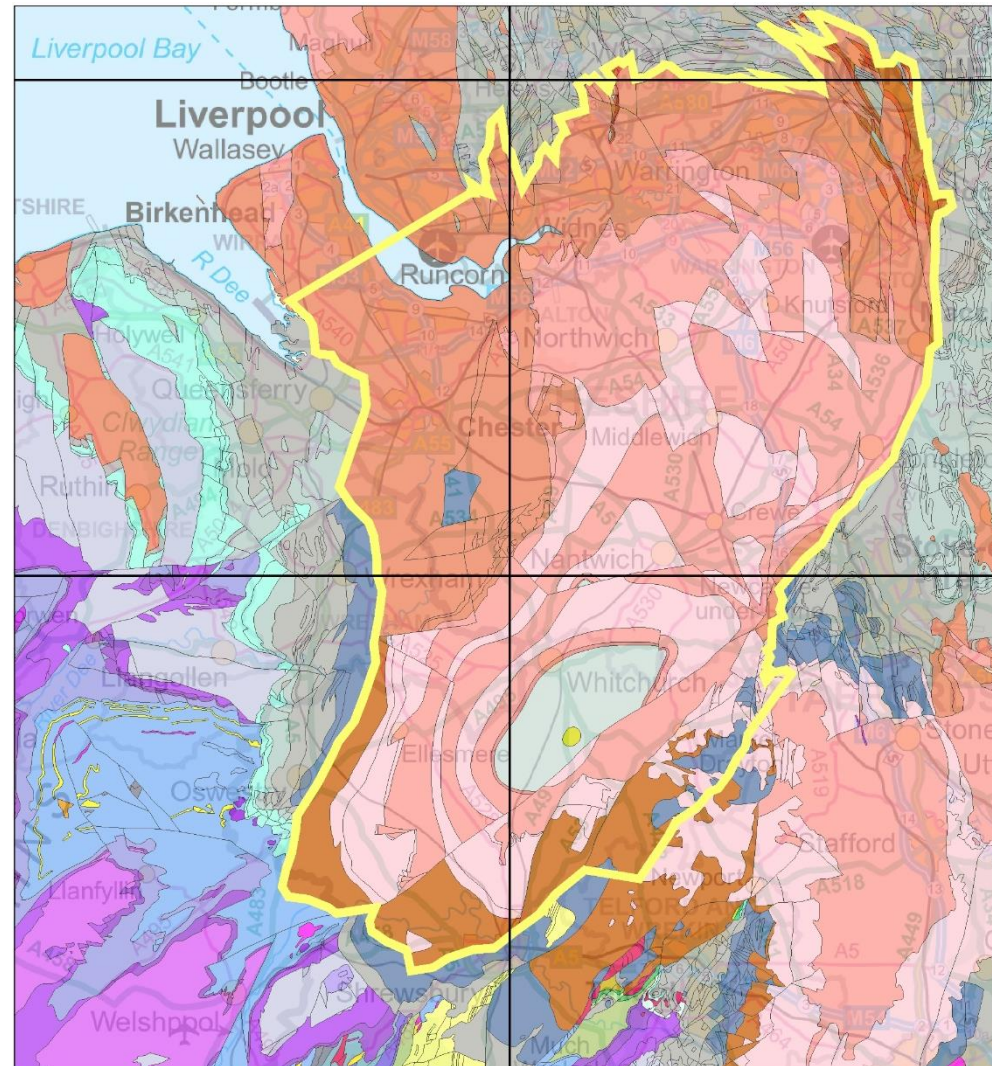
- |   |                            |                   |
|---|----------------------------|-------------------|
|    | St Bees Sandstone          | - Triassic        |
|   | Eden Shales                | )                 |
|  | Penrith Sandstone          | ) - Permian       |
|  | Millstone Grit Series      | )                 |
|  | Limestone Series           | ) - Carboniferous |
|  | Borrowdale Volcanic Series | - Ordovician      |



# The Cheshire Basin

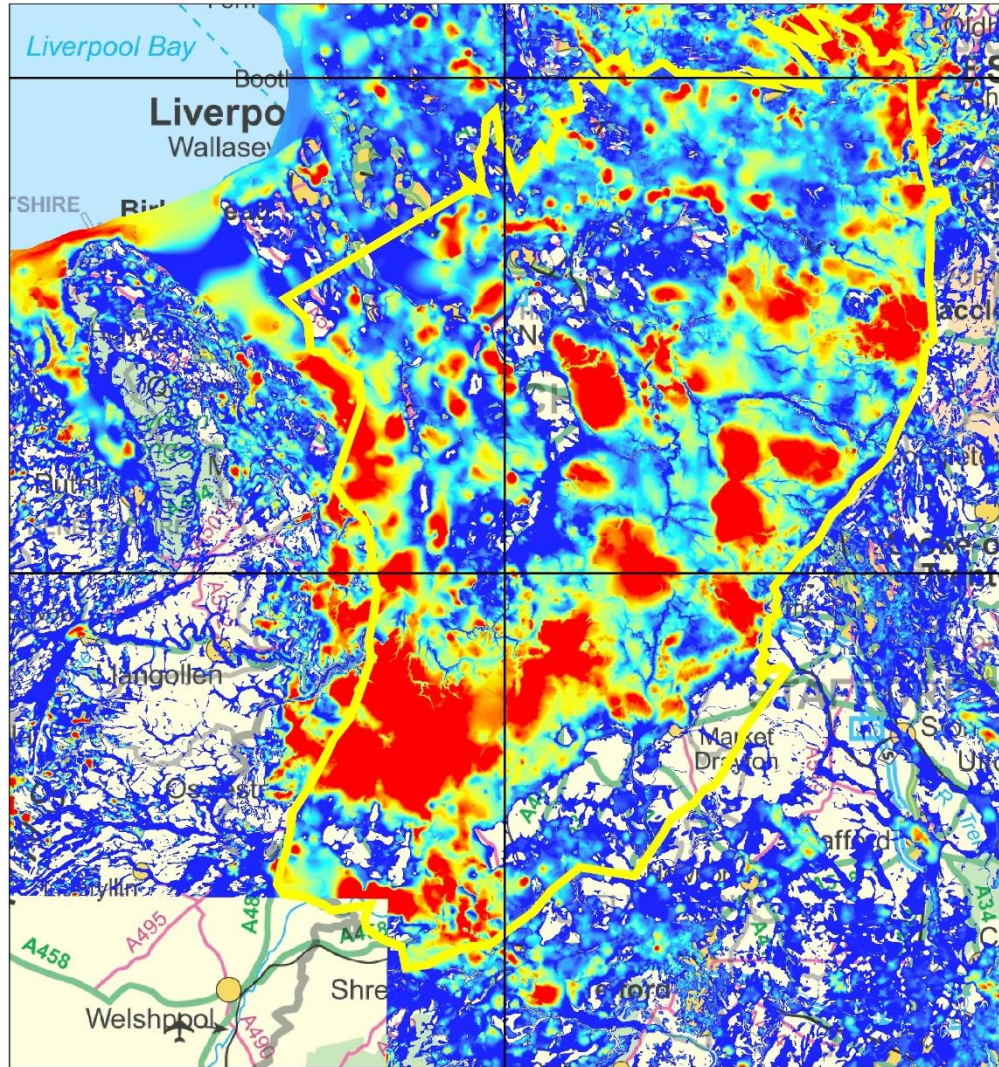
- Up to 5km of Permo-Triassic rocks
- Defined by a series of prominent geological faults that displace the rocks in places by over 3km
- Rocks are deepest in the east -asymmetrical (half graben)

Geology extract from DiGMapGB 50



# Ice Age

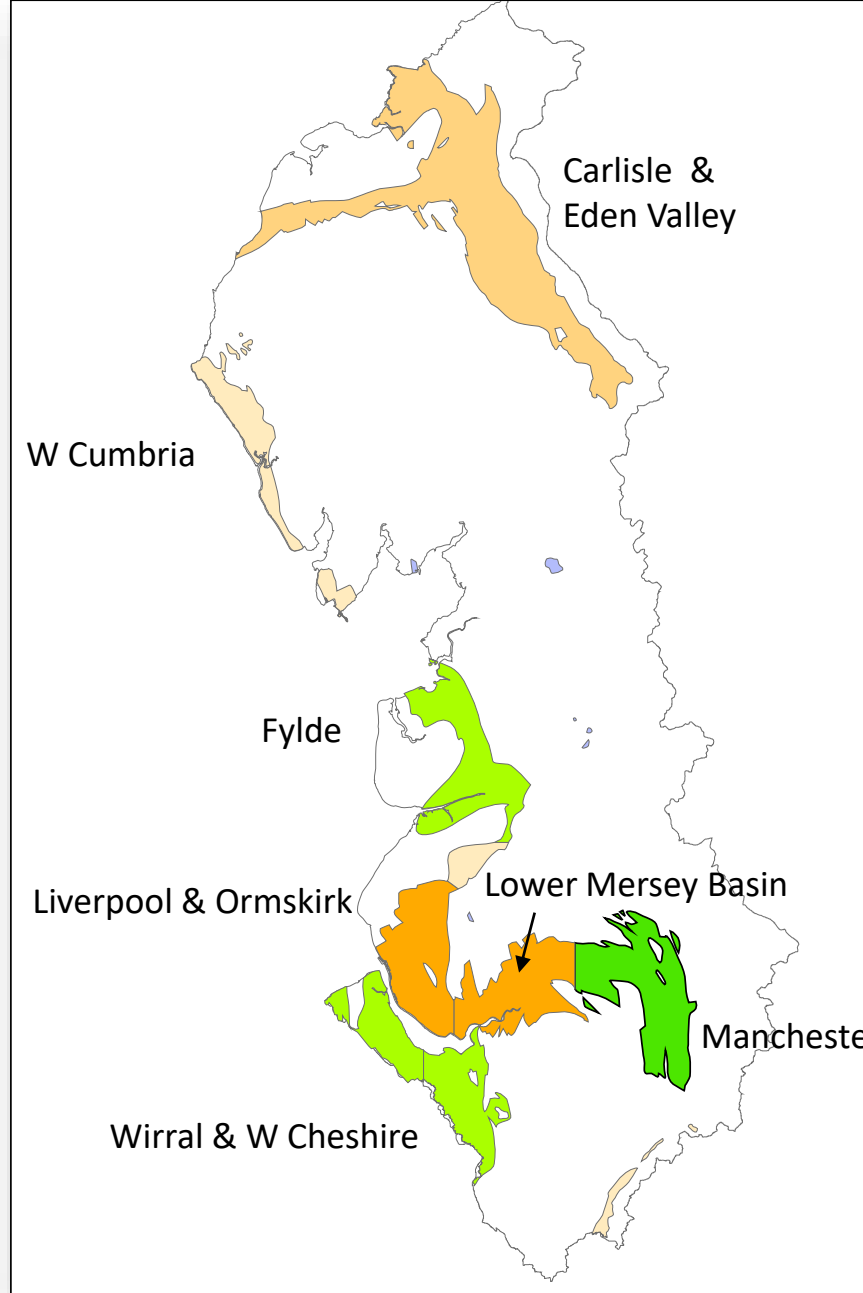
- Deposits range from Till (sandy gravelly clay) to sand and gravel
- Thickness of superficial deposits very variable from less than 2m (BLUE) to over 100m thick (RED)





Now back to groundwater stuff

.....and the why only 11%



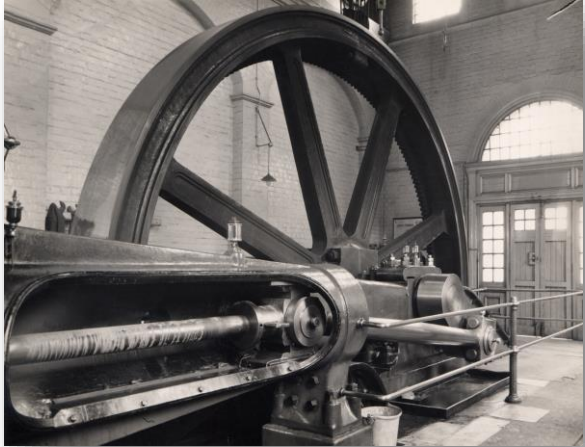
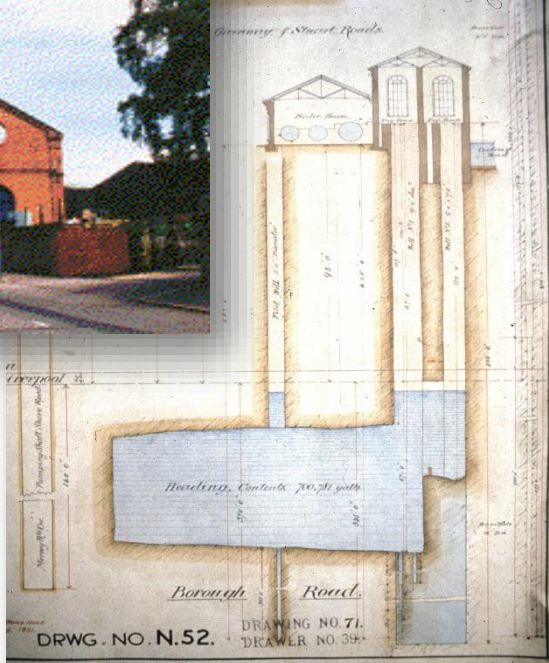
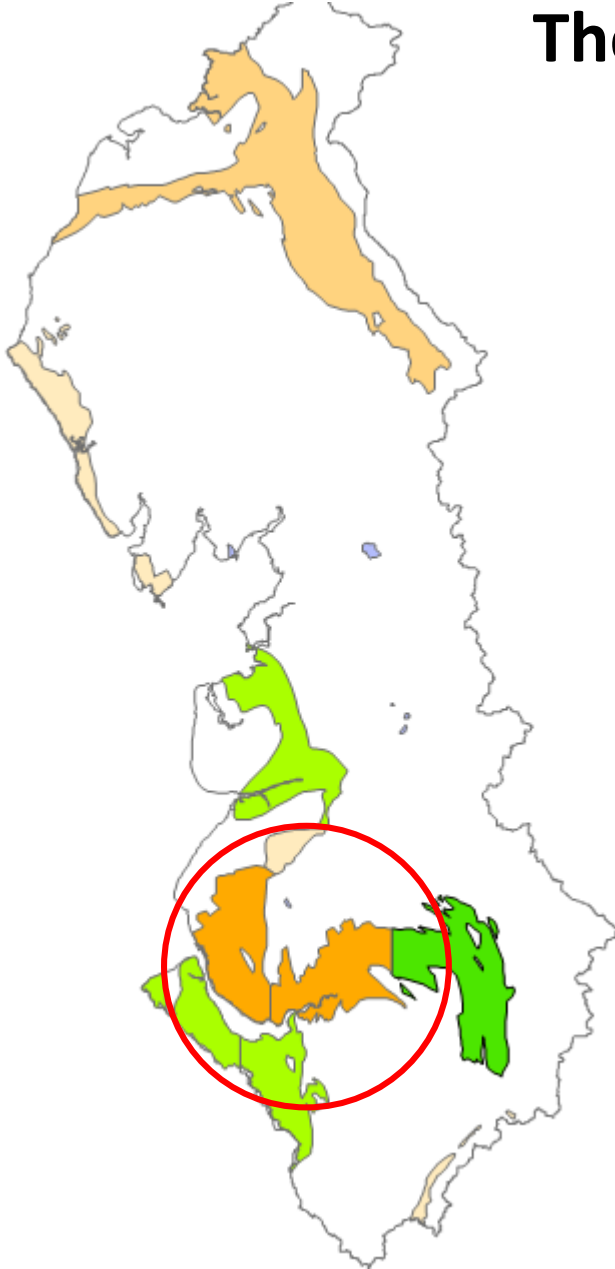
## Permo-Triassic (Principal) Aquifer Management Units



Abstraction history and water supply in the NW

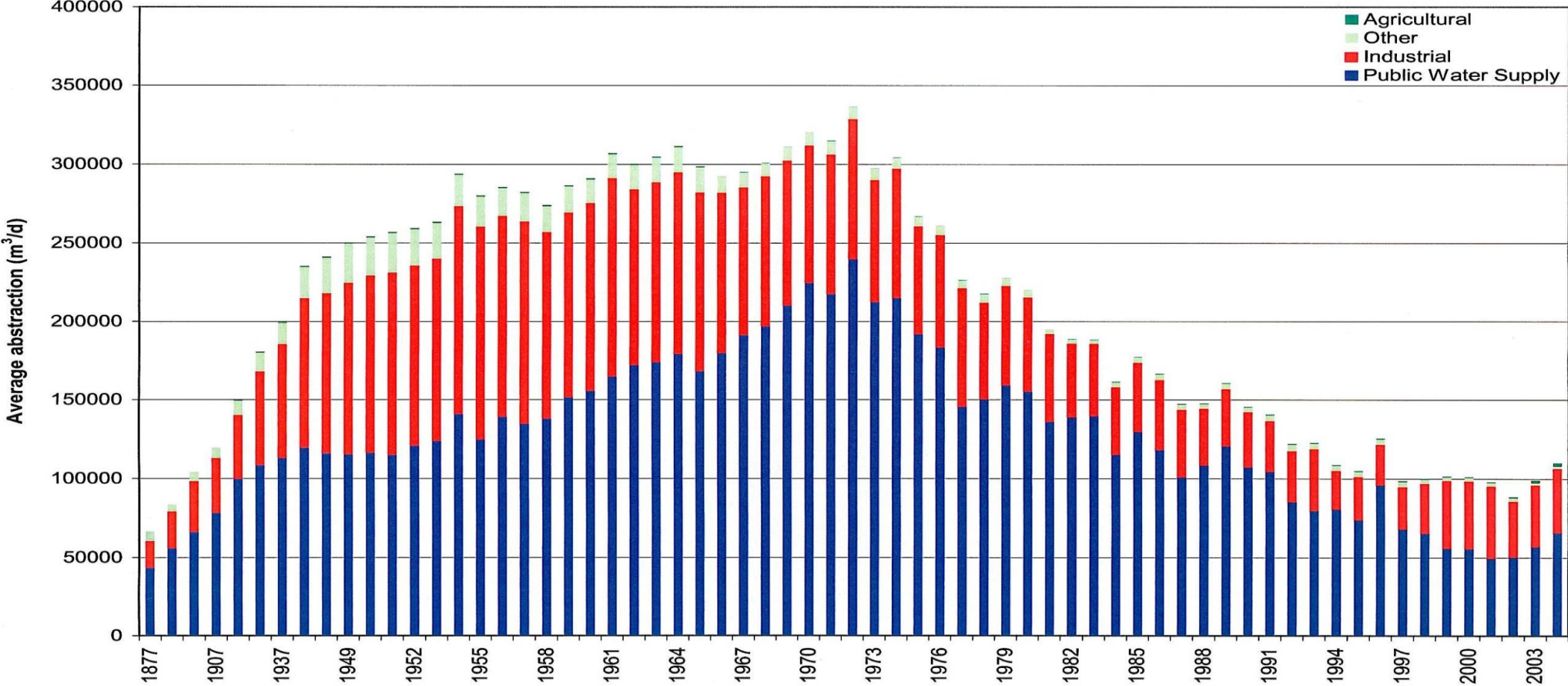
# The Mersey Basin

~ long history of groundwater abstraction



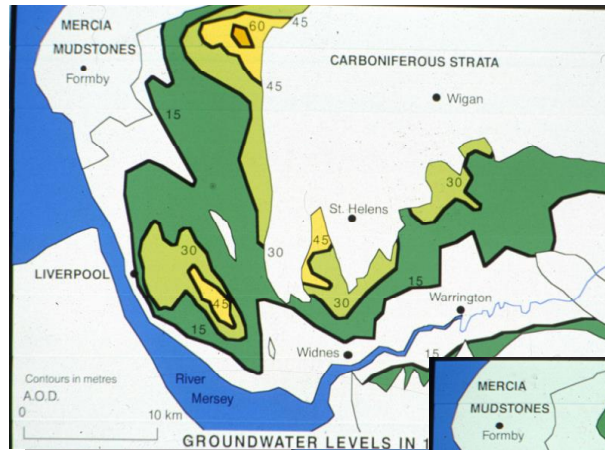


# Mersey Basin groundwater abstractions



# Mersey Basin - Groundwater Levels

1869



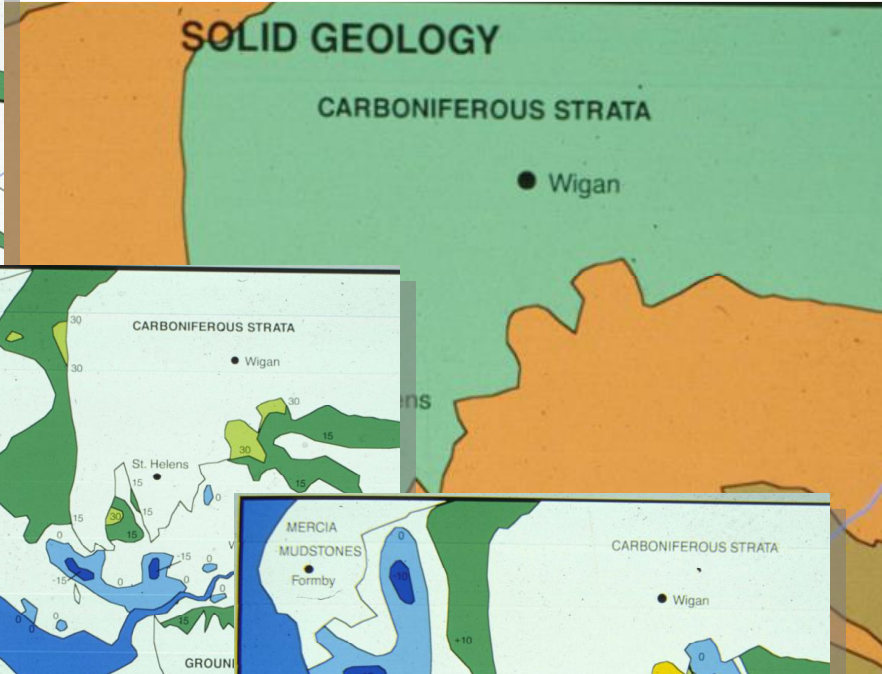
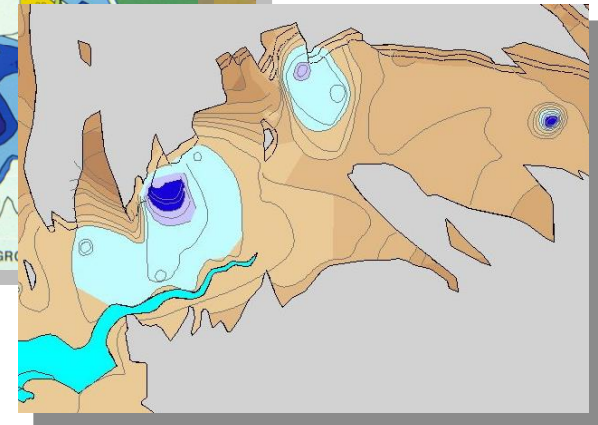
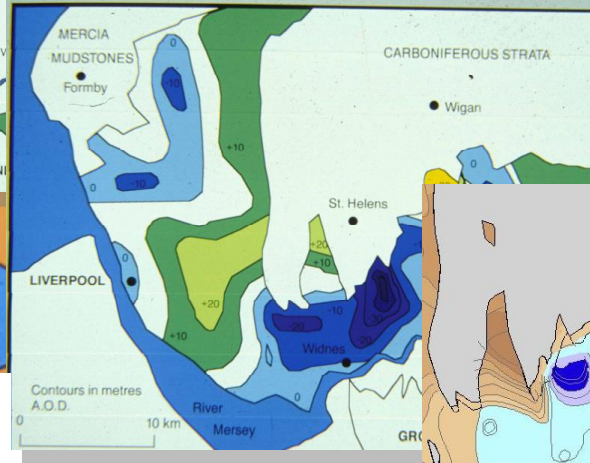
1967



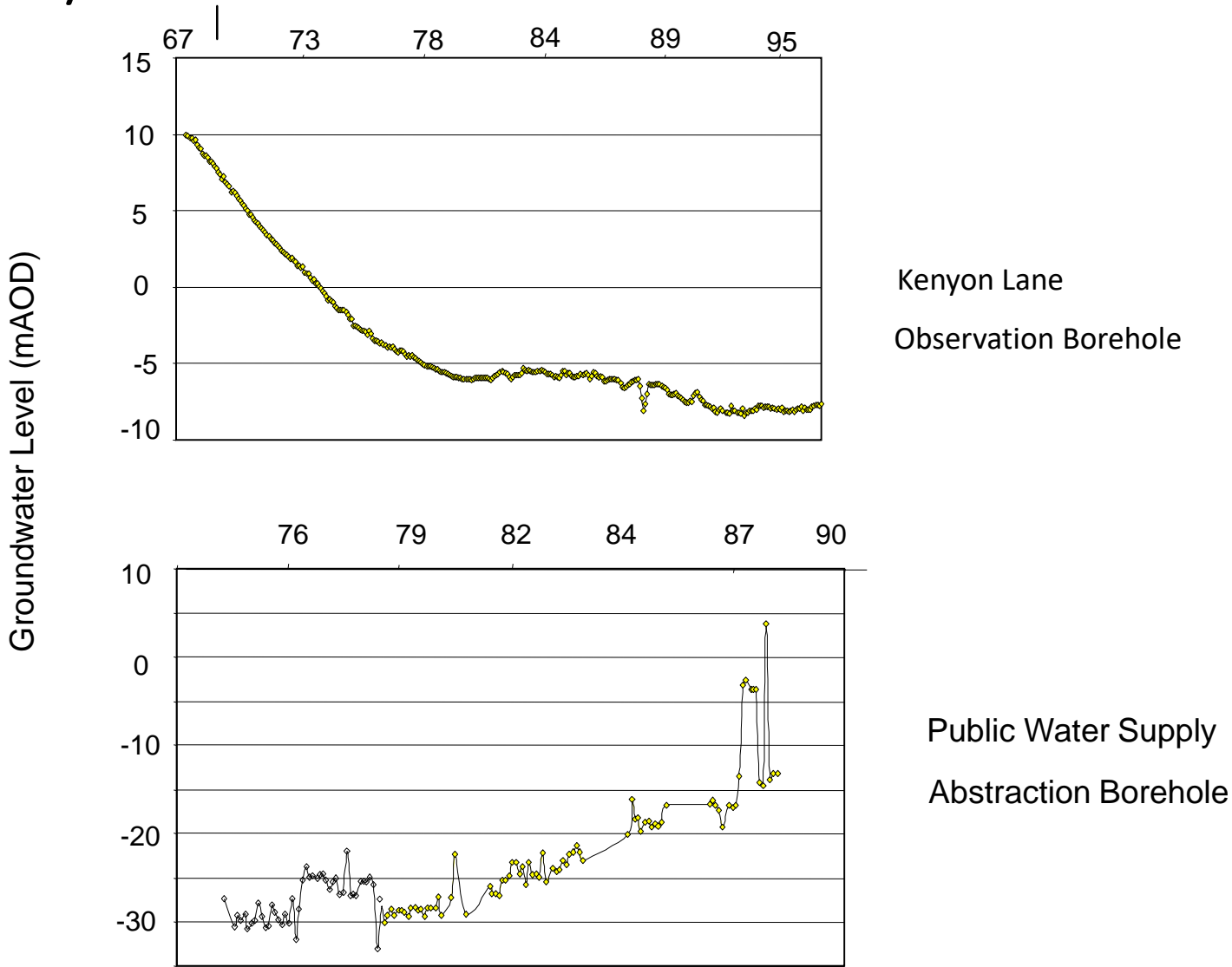
1980



2000



# Groundwater Hydrographs Mersey Basin



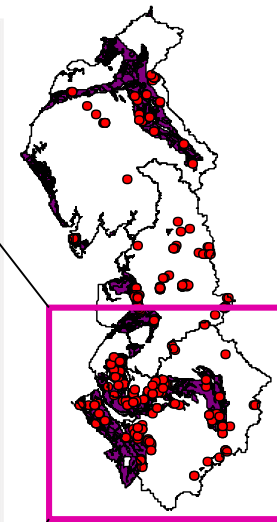
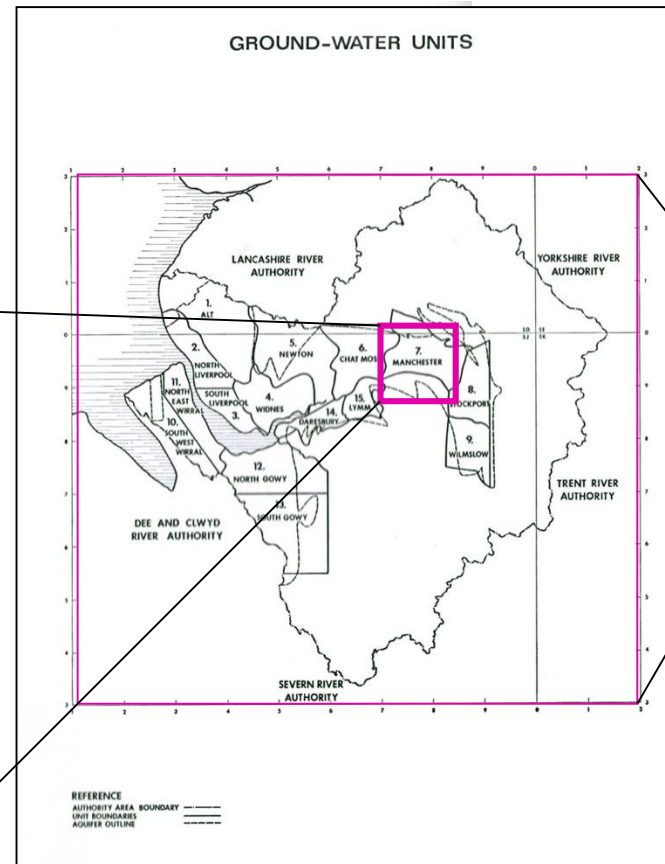
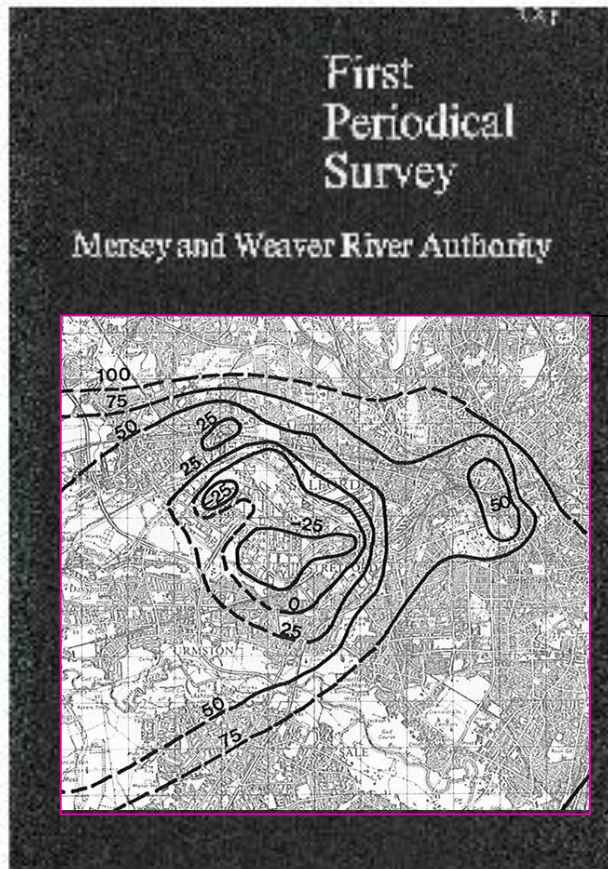


# Groundwater Lake - Winwick



# Regulation history

# *In the beginning...* Water Resources Act 1963



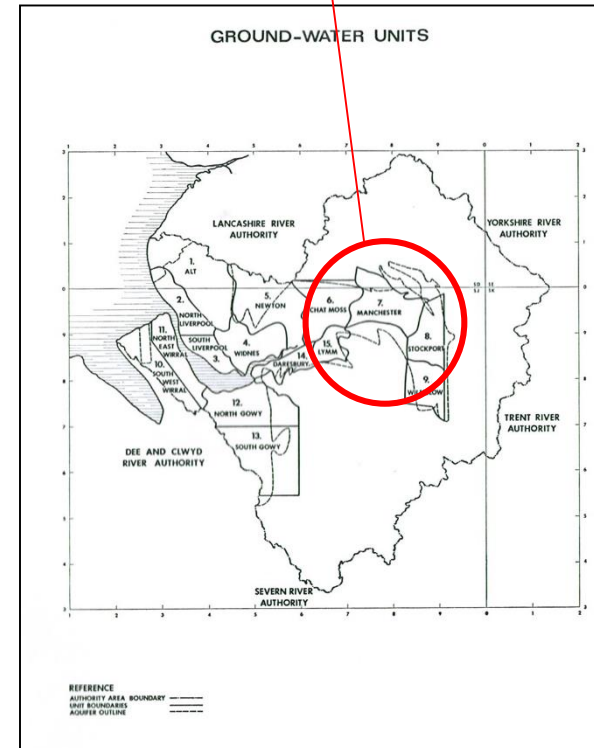
Duty to  
**assess** WR  
availability

... and **manage**  
groundwater

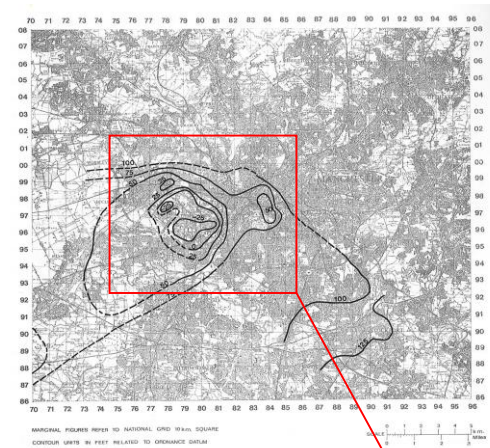
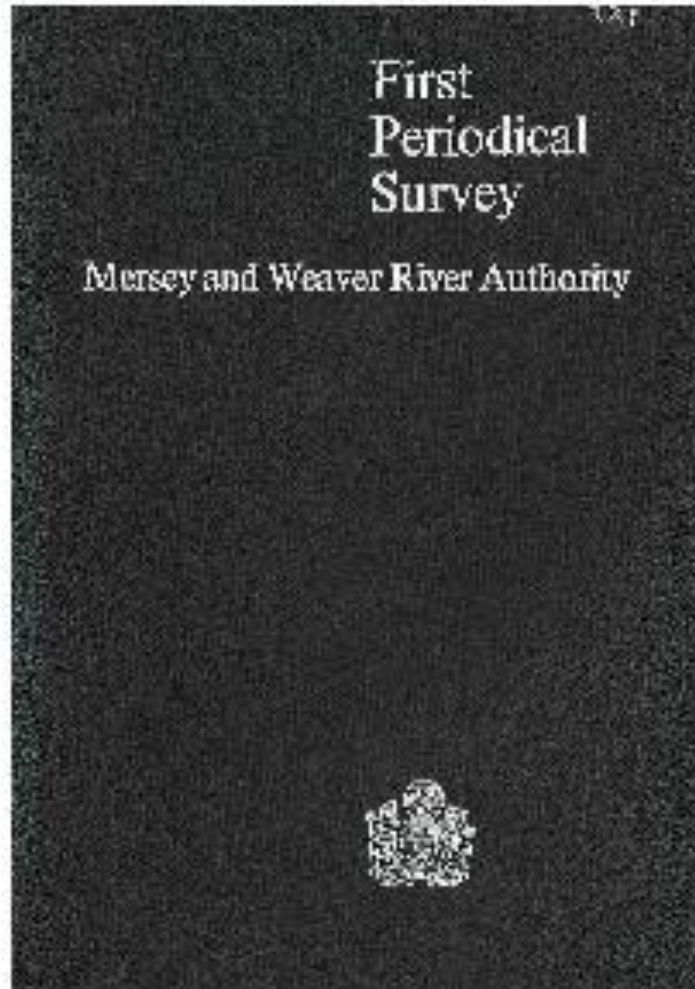
9.9 Within the Manchester Ground-Water Unit, there are some signs of slight improvement in ground-water level and the main aim must be not to exceed the present rates of abstractions. Some temporary increases could be considered so long as these were spaced well away from the area within Trafford Park where abstractions are at present concentrated.

## Mersey and Weaver River Authority

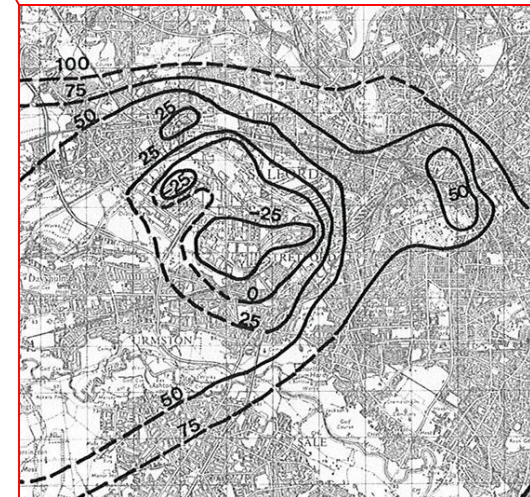
### Statement of Policy for Ground-Water Management 1973



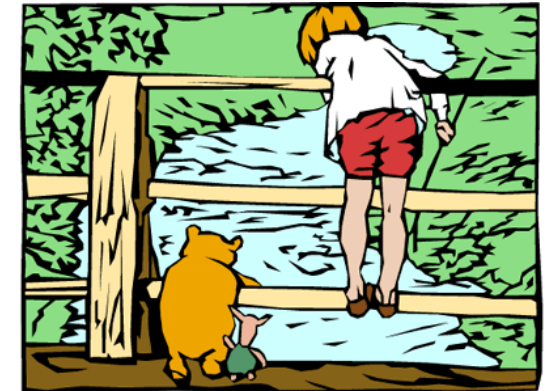
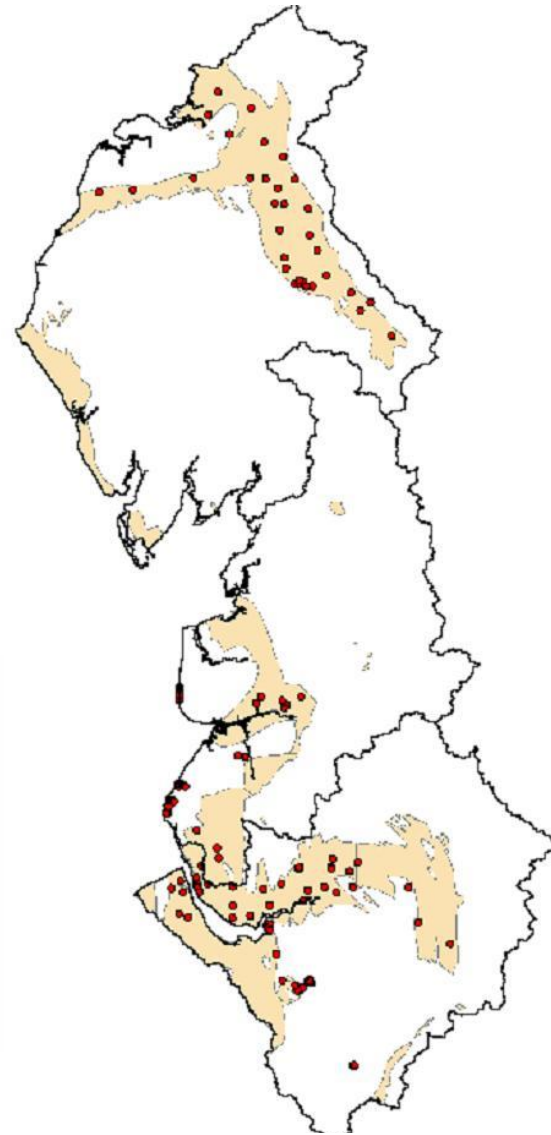
# Resources Assessment - *the old days*



MANCHESTER GROUND WATER DISTRICT  
GROUND WATER CONTOURS  
1965



# Resources Assessment - *the start of monitoring*



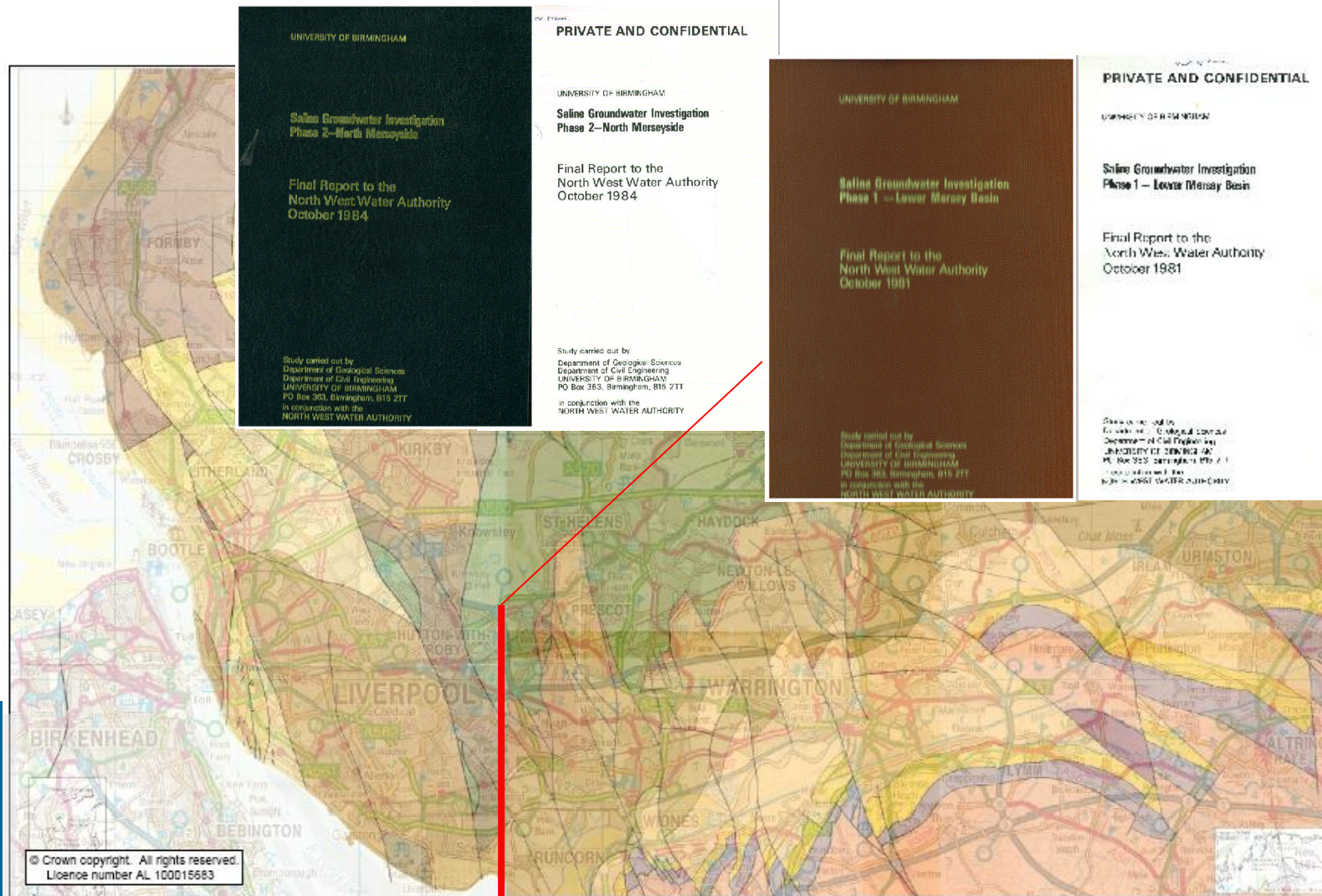
***Development***

**NW Observation borehole network**

***Monitoring***

# Resources Assessment - *the early days*

~ 1980's Mersey Basin Saline Groundwater Study







# What's changed?

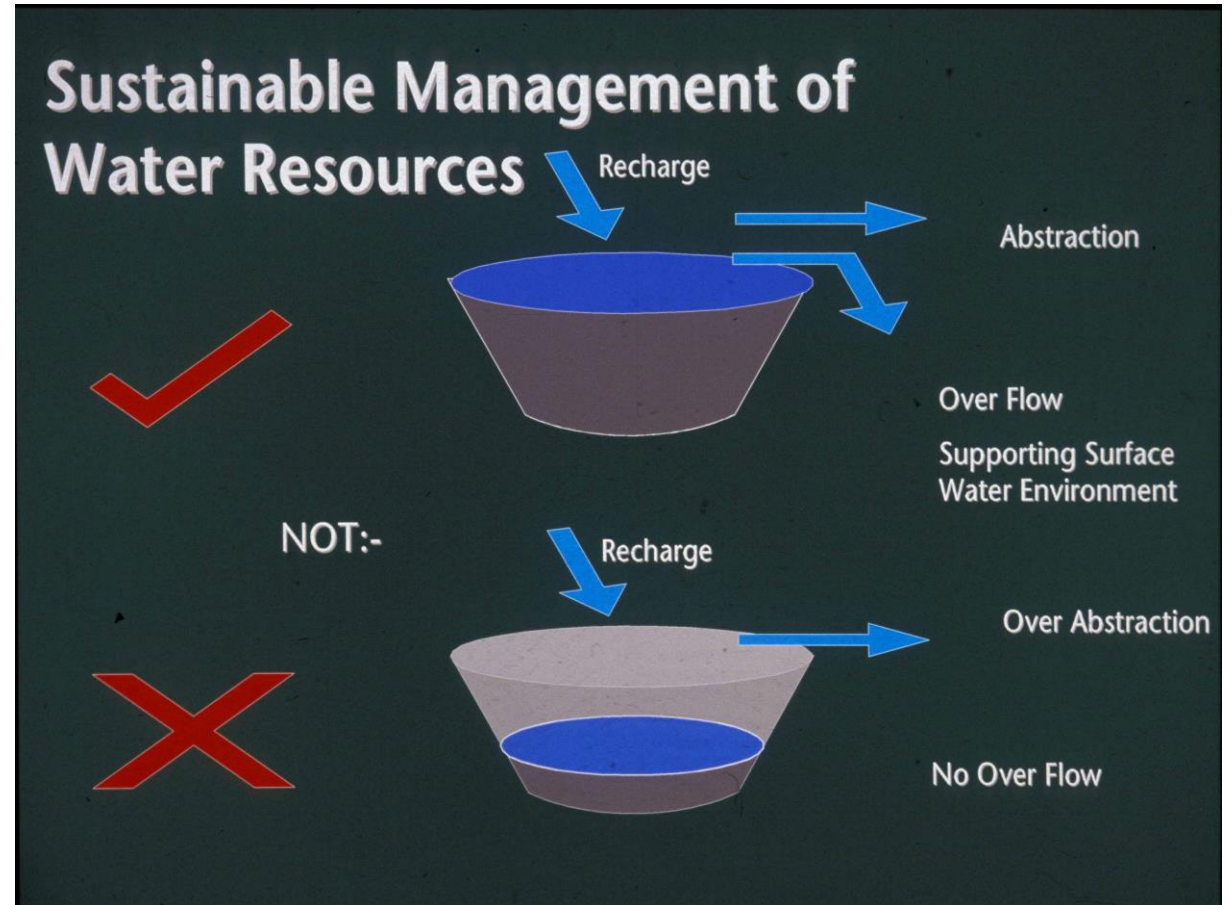
How do 'we' manage (ground) water resources now on a regional scale?

## CAMS & WfD

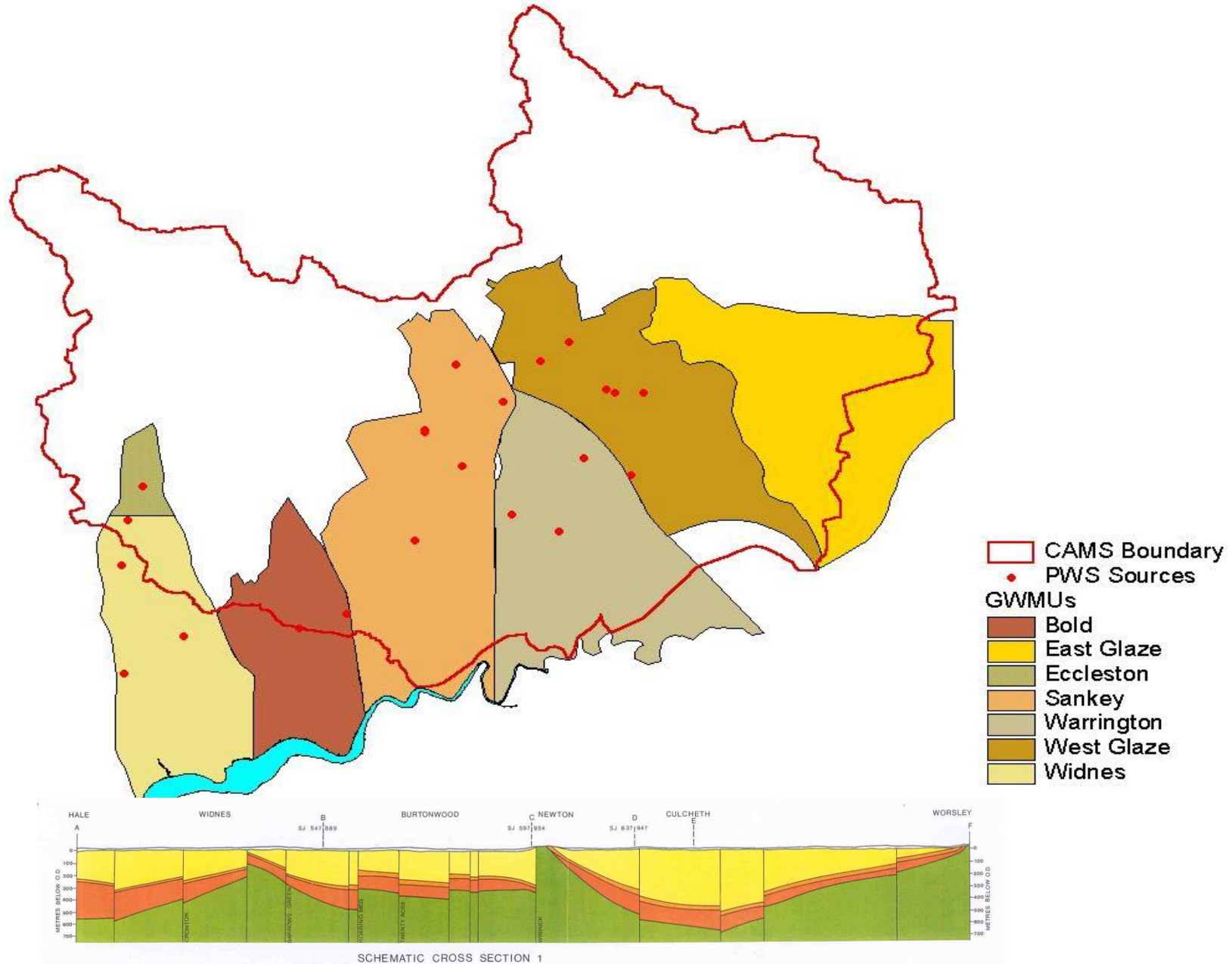
Catchment Abstraction

Management Strategies-

- Integrated SW/GW
- ecology
- environmental needs
- defines water resource availability



# CAMS still use groundwater management units



# Key insights:



- Compartmentalisation/structural controls
- Salinity
- Limited recharge

from

- Operational testing (groundwater investigation consents)
- Groundwater level monitoring data
- Groundwater resources (modelling) studies

# Key insights:

- Compartmentalisation/structural controls

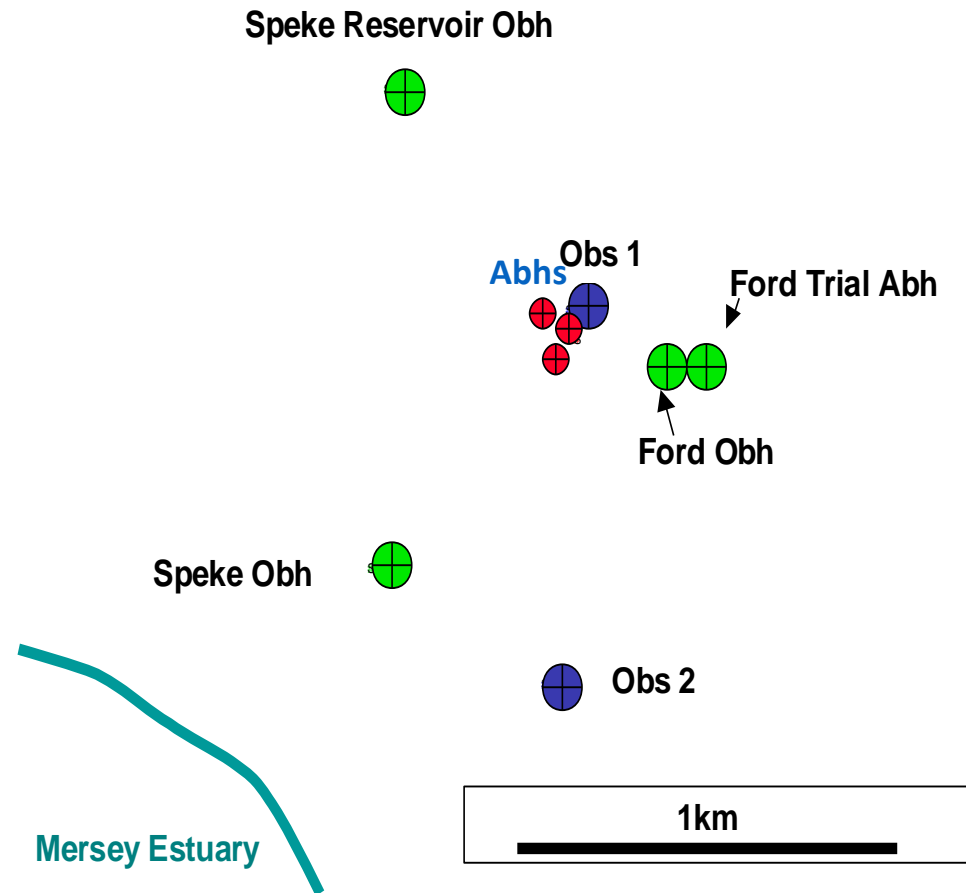
**Operational**  
**Test pumping**

**Speke**

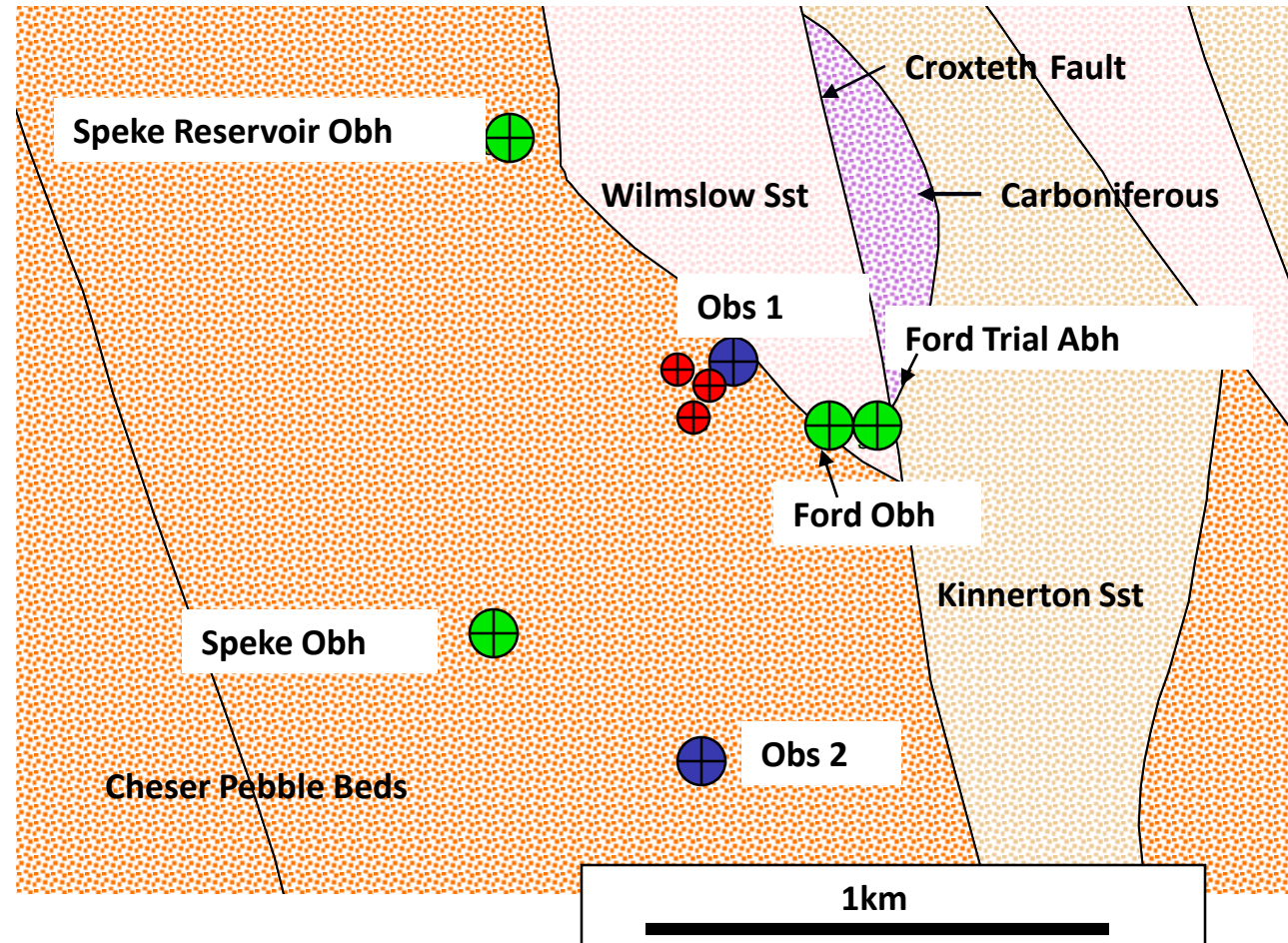


# Speke

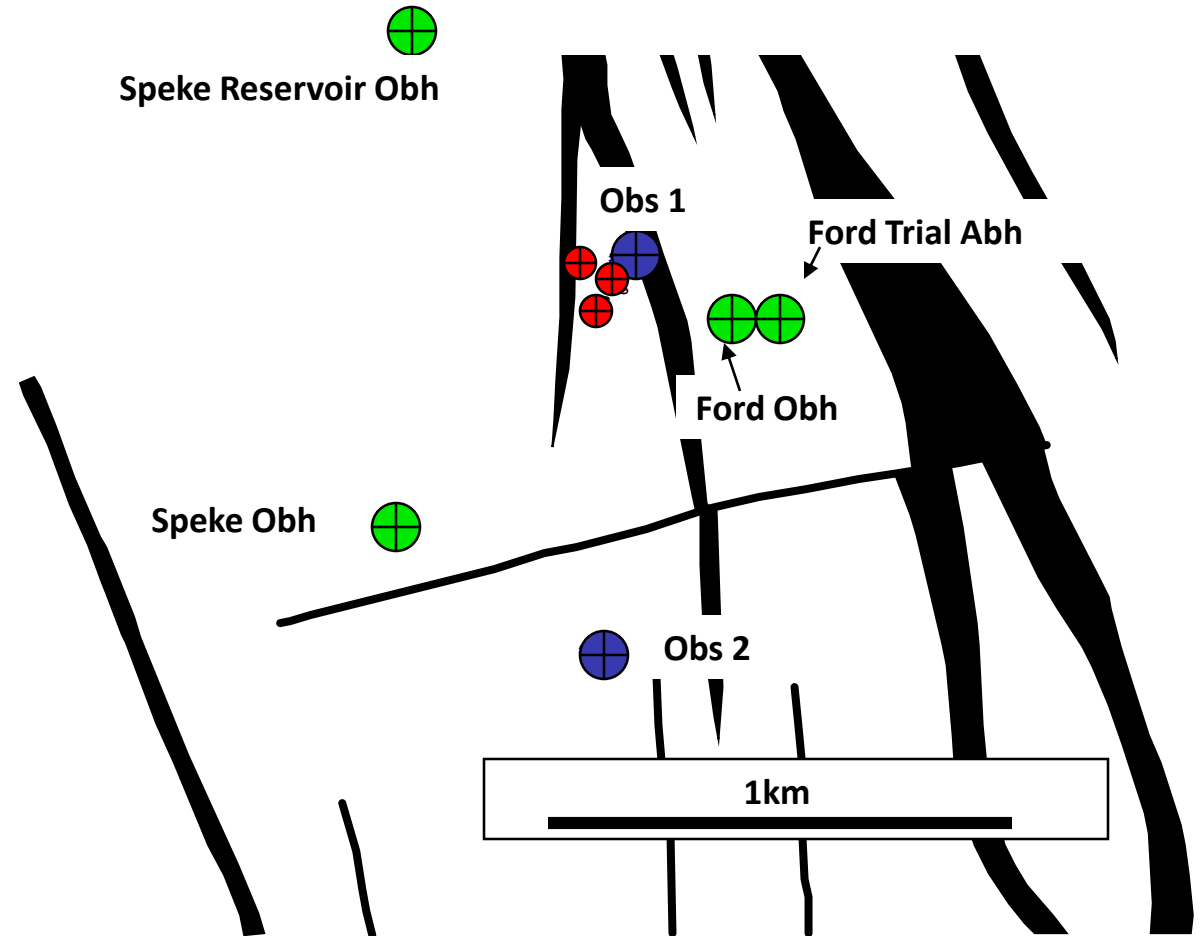
- Industrial Abstn
  - licence increase
- Saline intrusion?
- Sustainability?



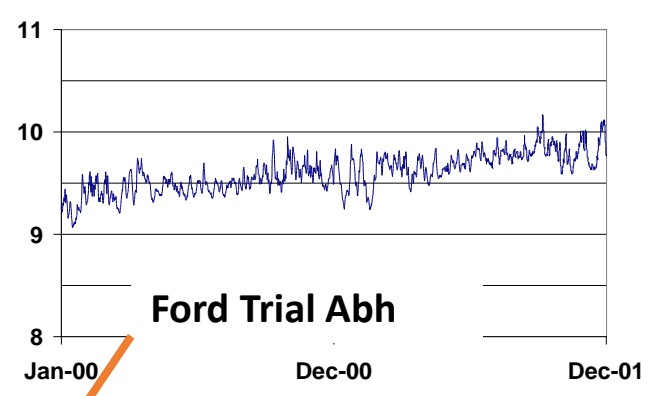
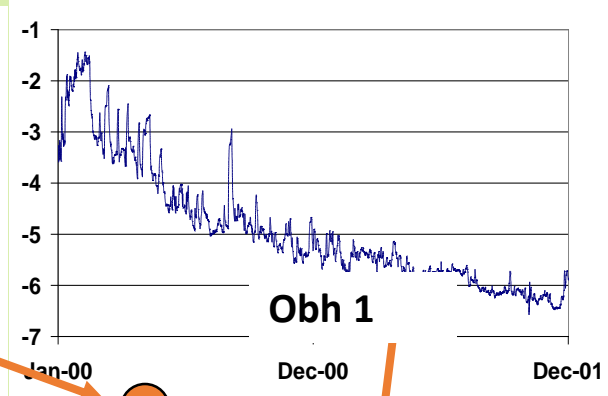
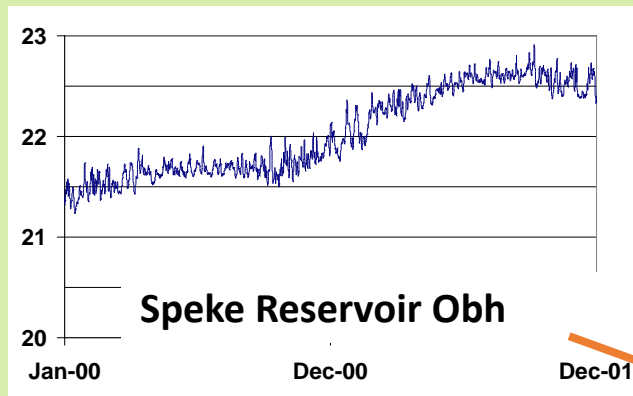
# Speke - Solid Geology



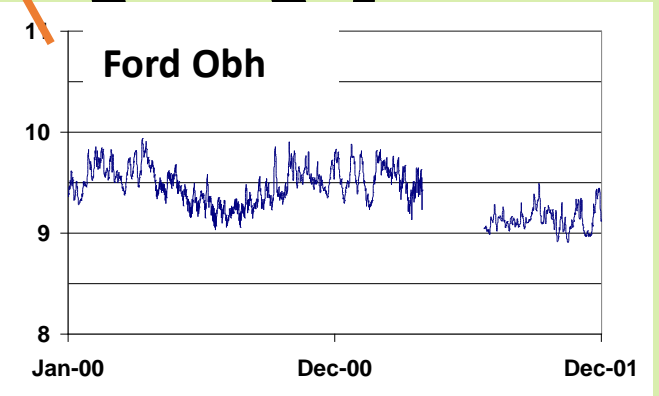
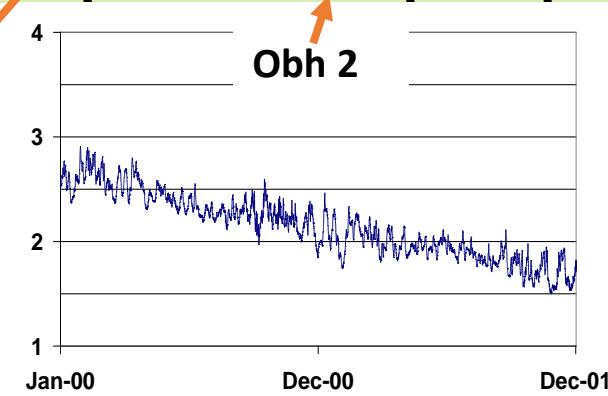
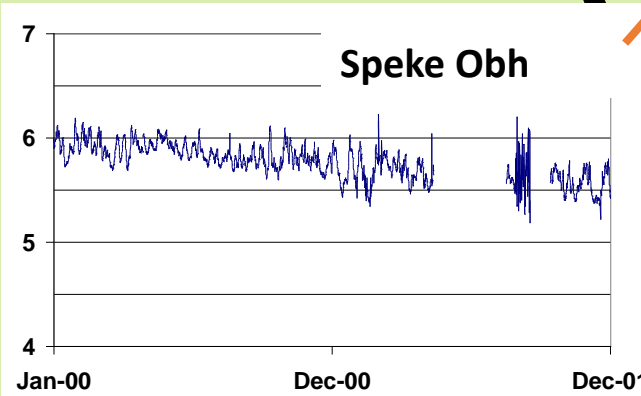
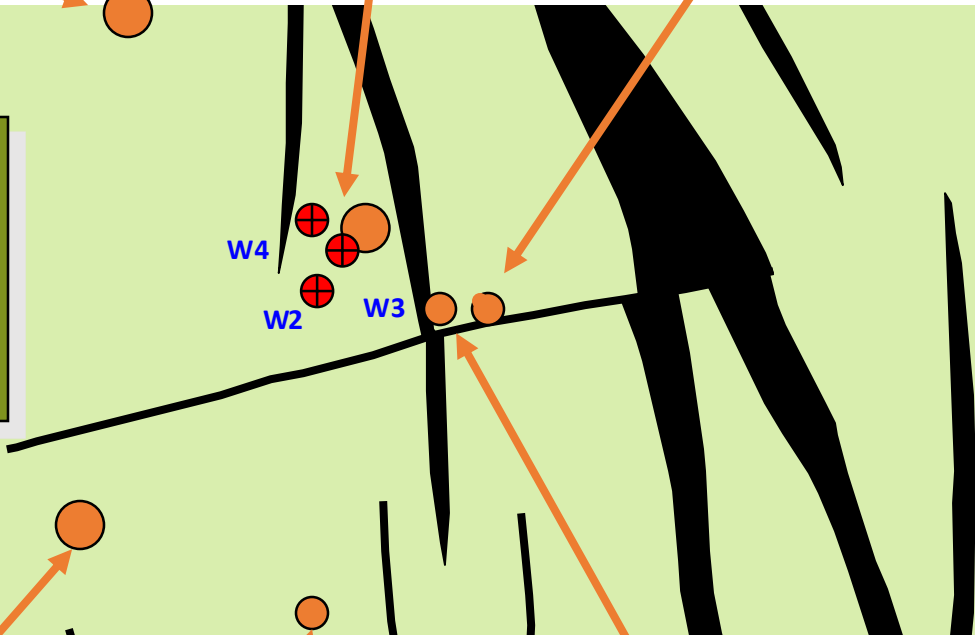
# Speke - faults *(from seismic)*



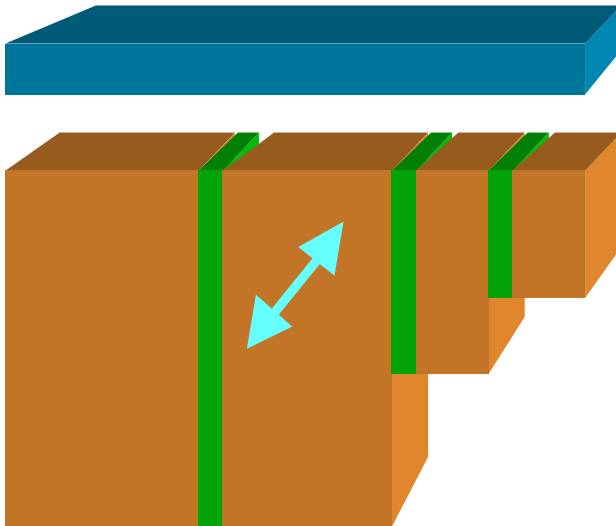


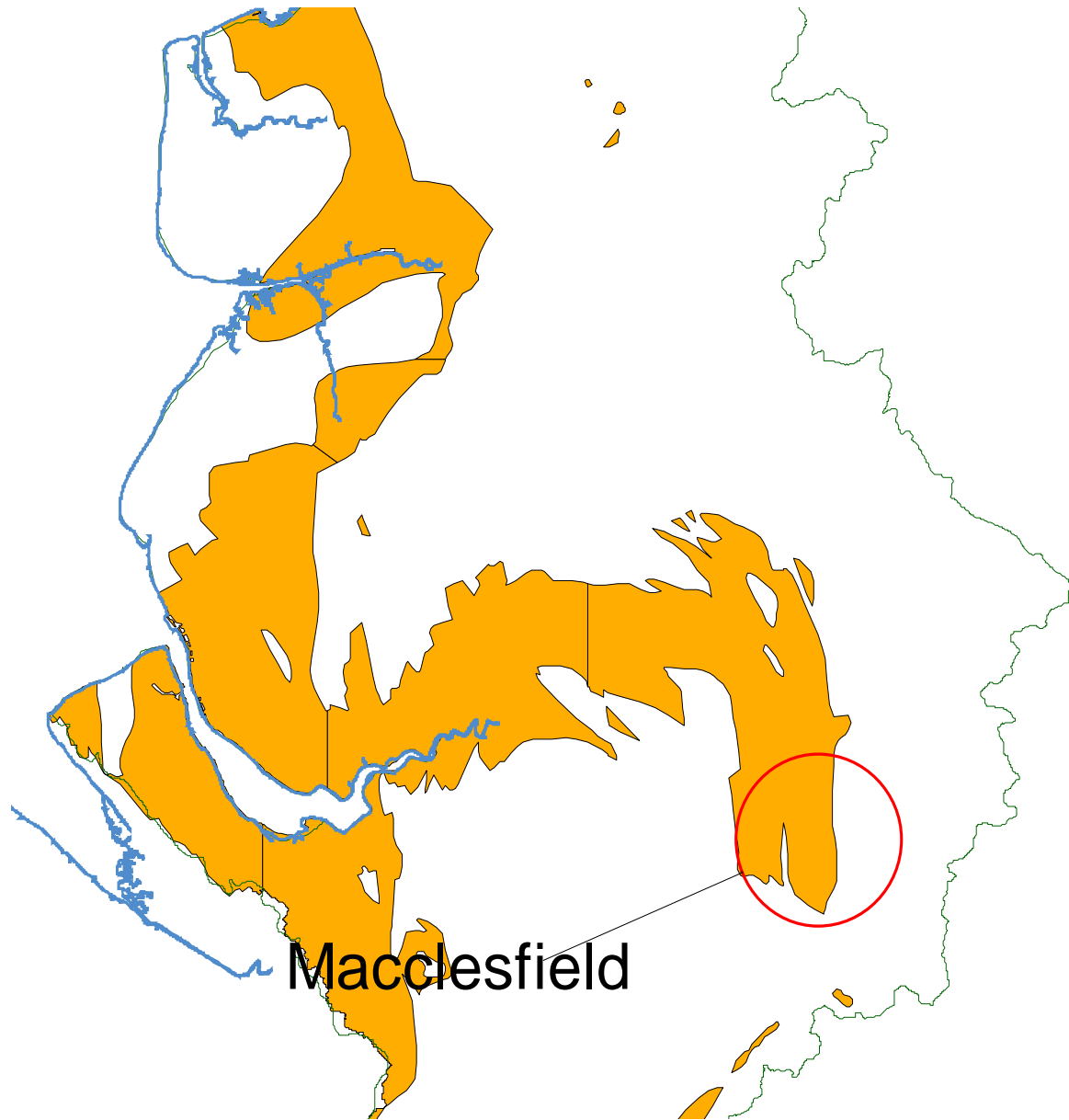


**2 year Operational Pumping Test ( under TLL)**



# Speke - Summary

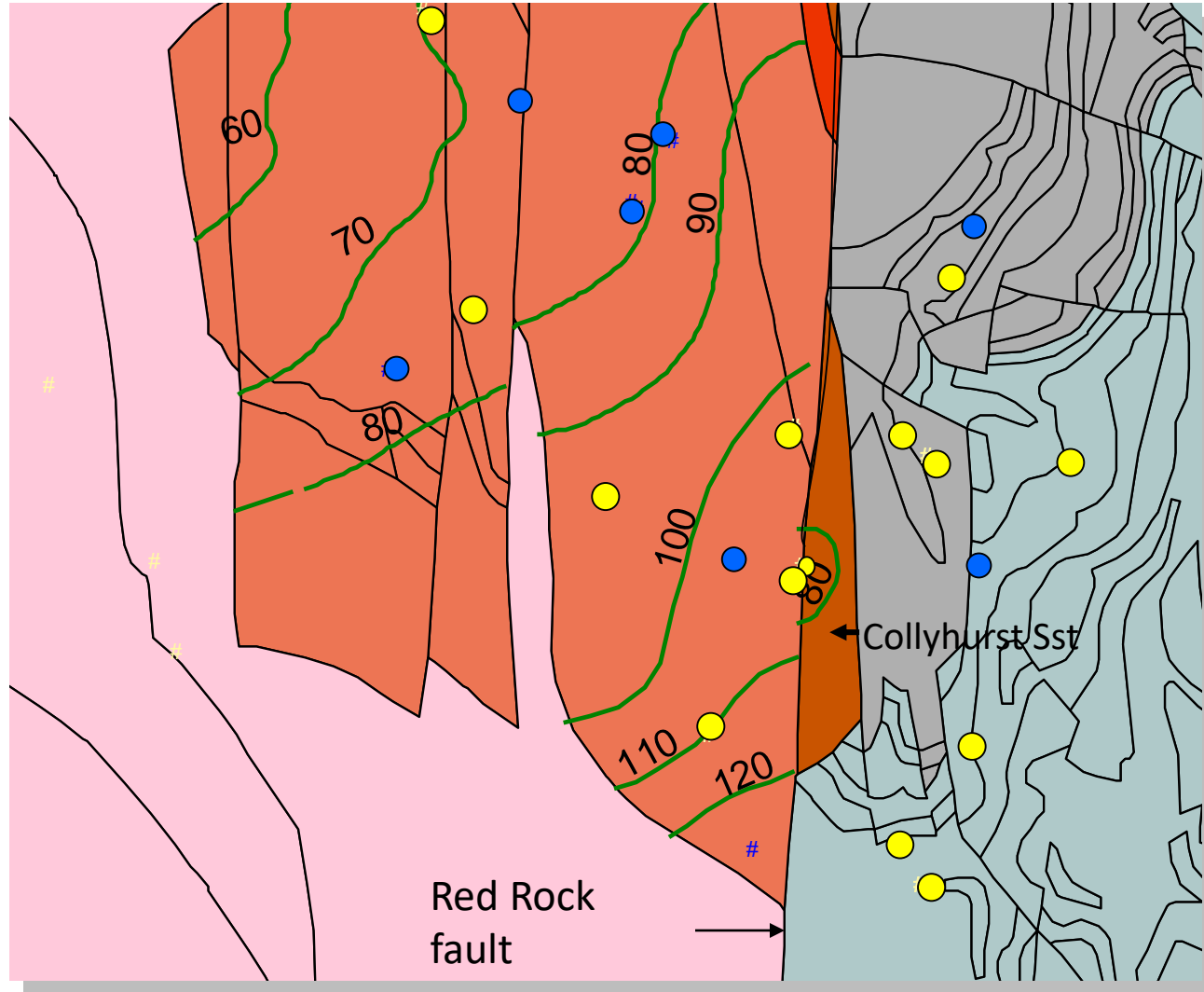




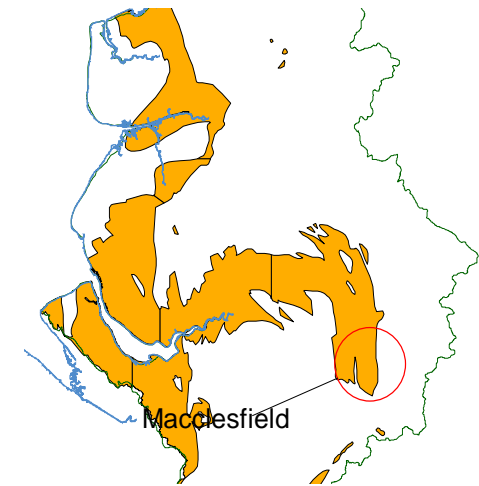
Macclesfield

Macclesfield

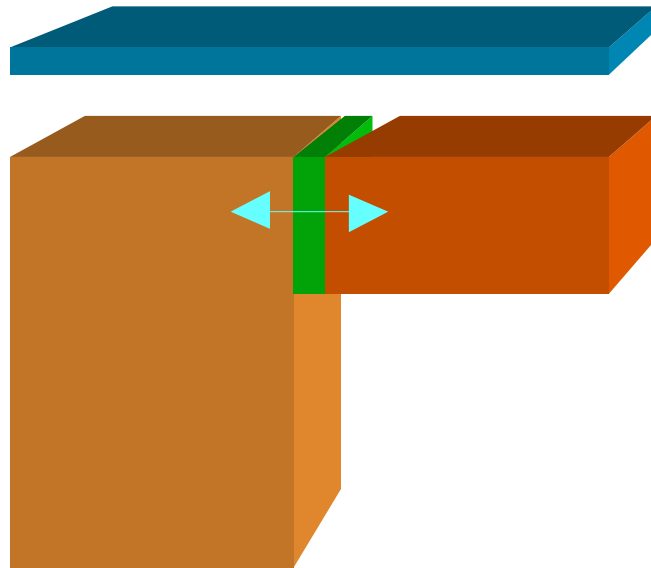
# Macclesfield Geology & GW levels (2000)



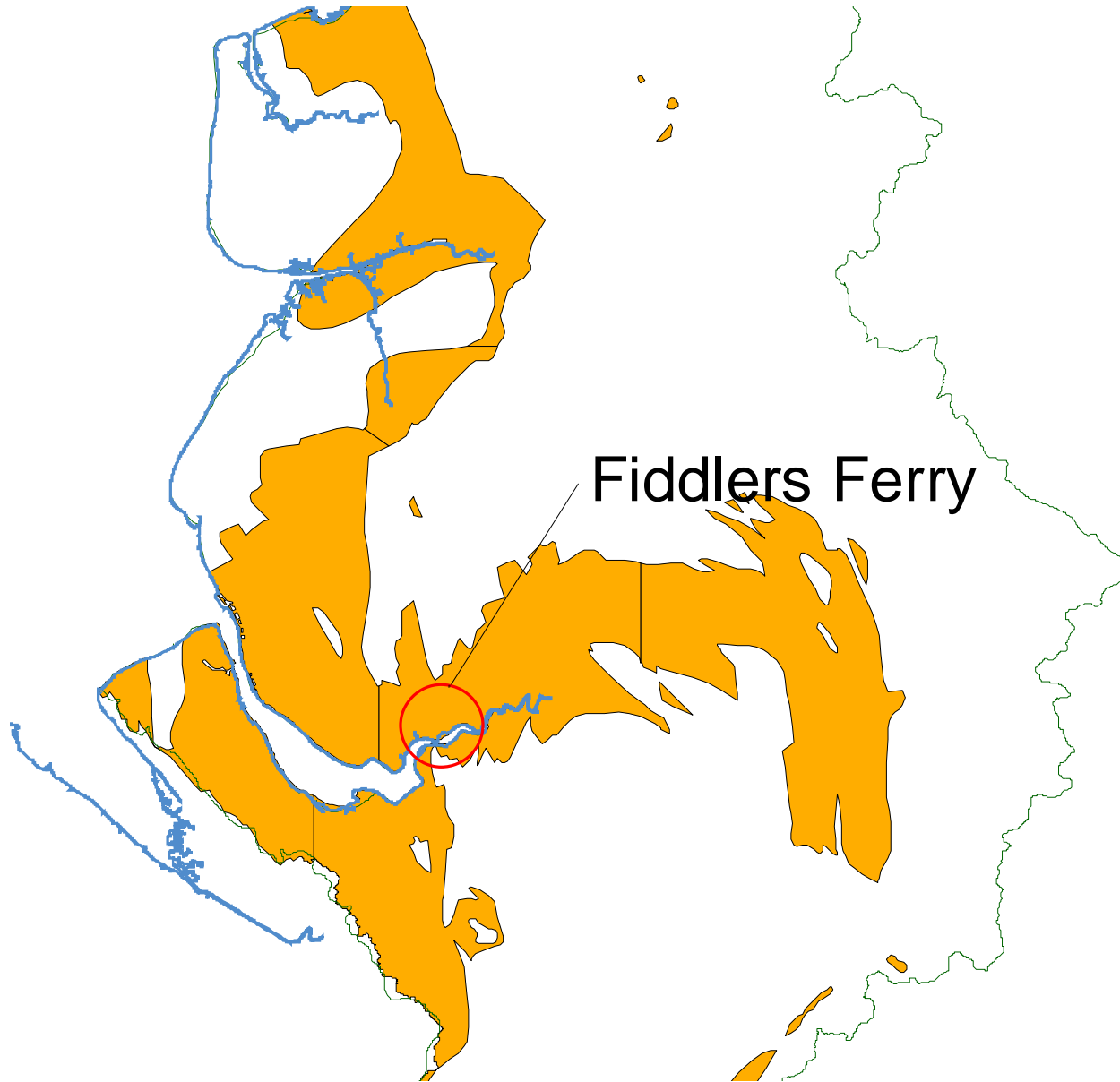
- PWS Abhs
- Industrial Abhs



# Macclesfield - Summary

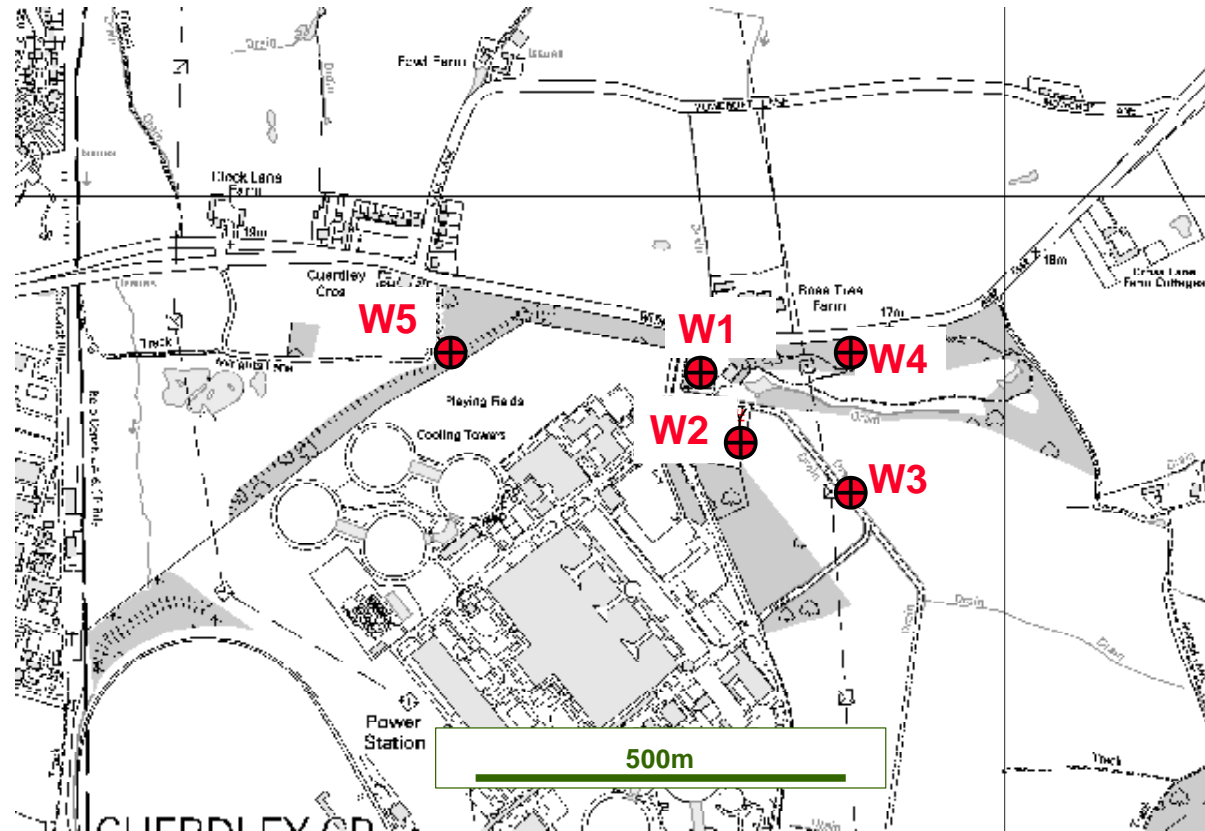


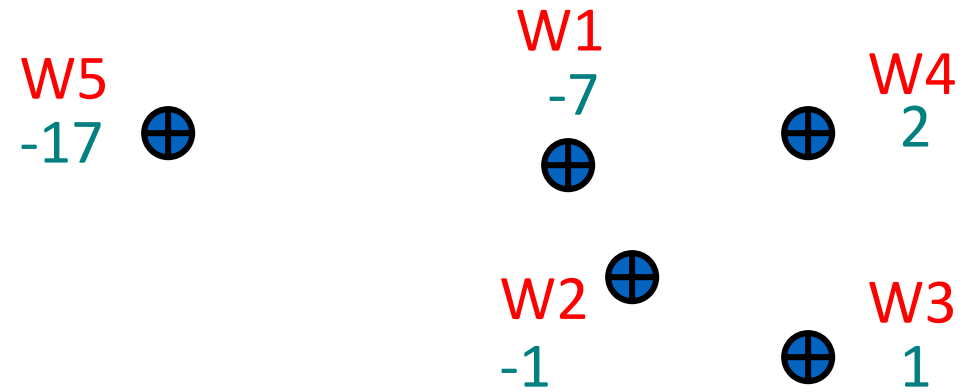
# Fiddlers Ferry Power Station



# Fiddlers Ferry

- Power station
- Independent water supply
- Investigations 1984
- 5 trial bhs





500m

---

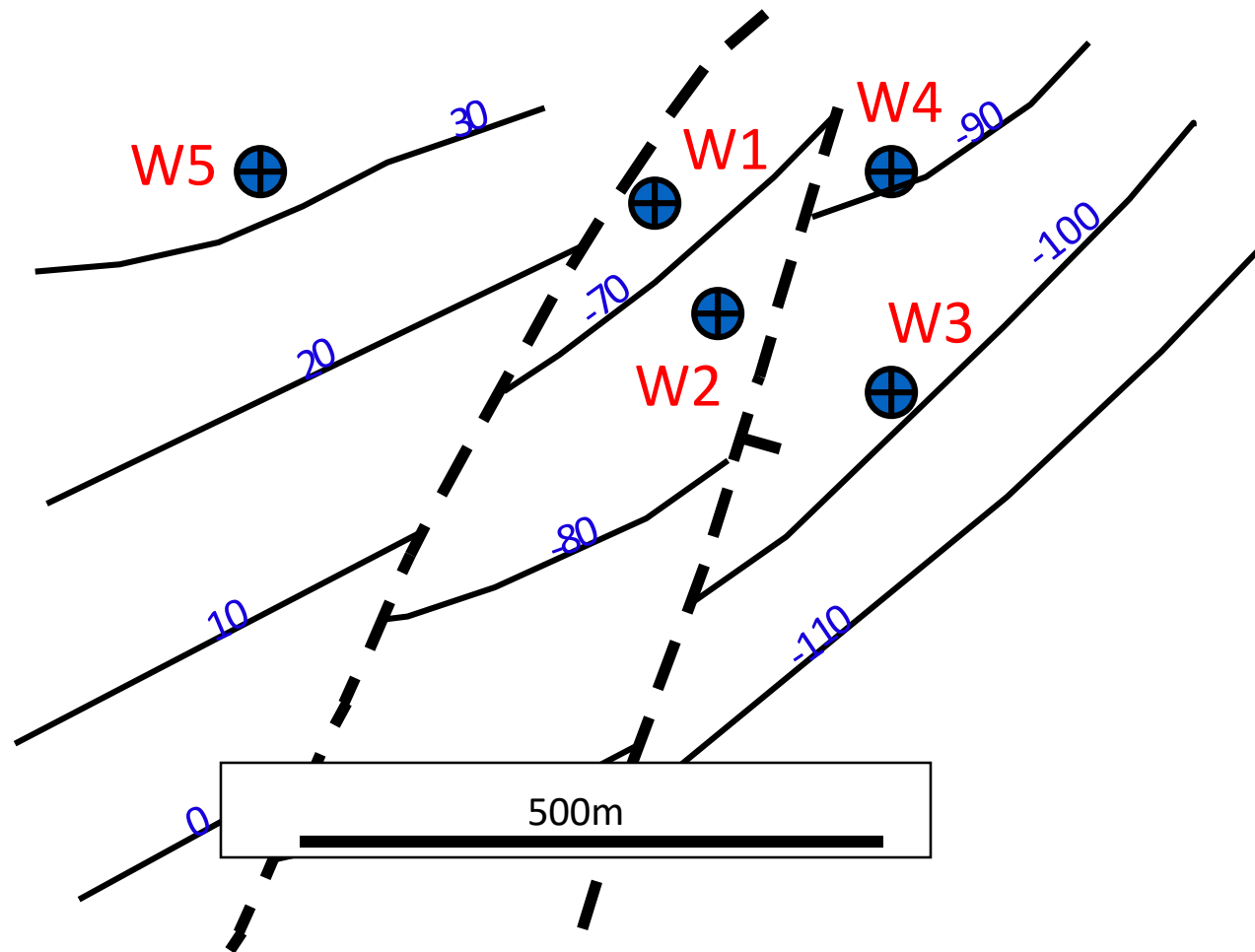
Fiddlers Ferry - Water Levels mAOOD (1984)





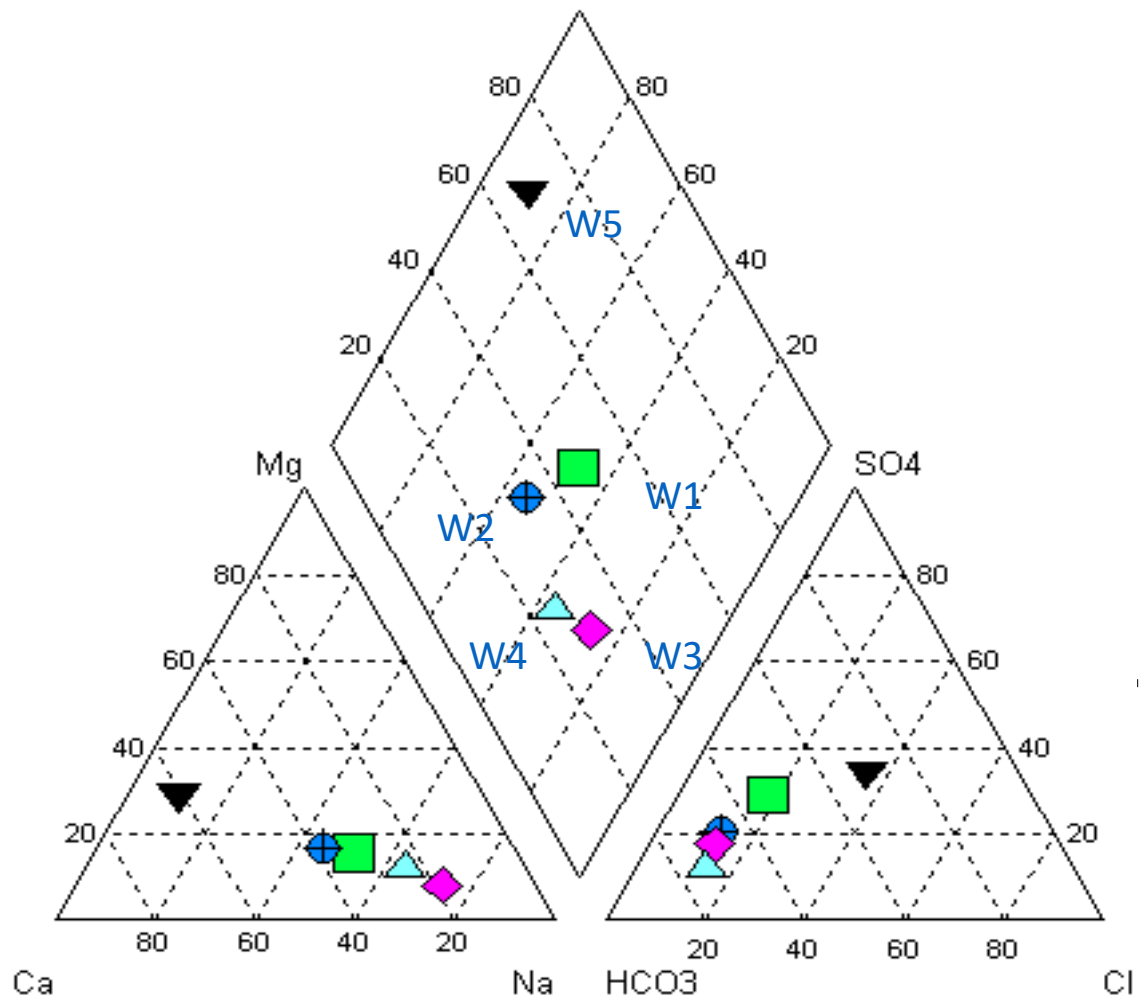
500m

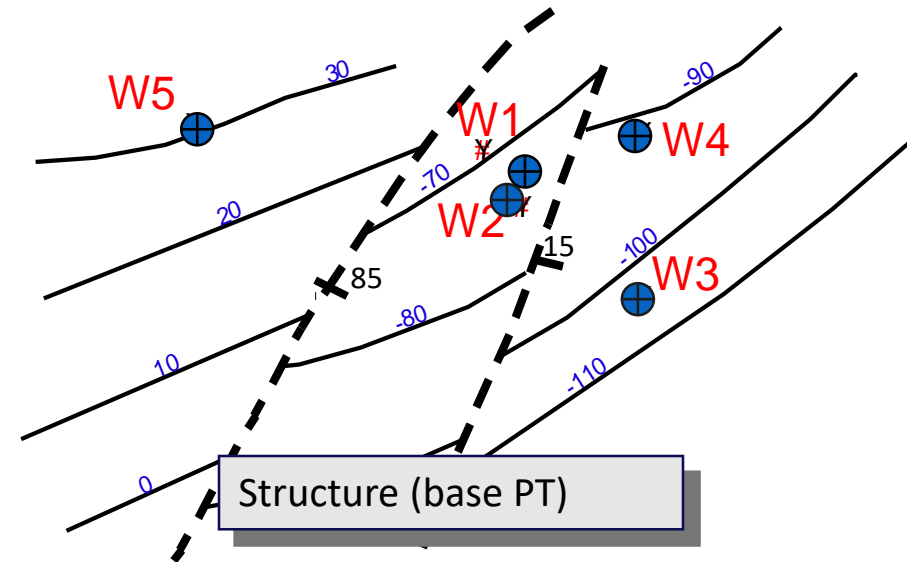
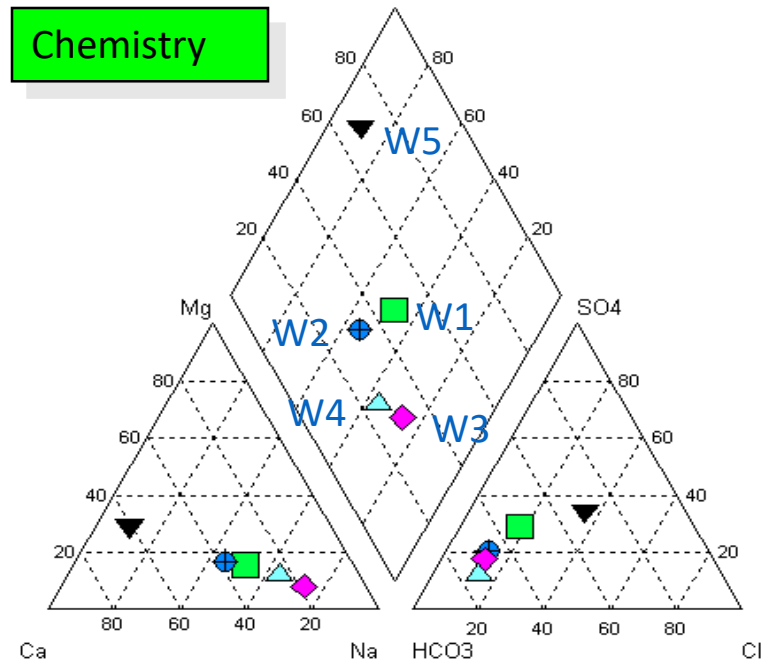
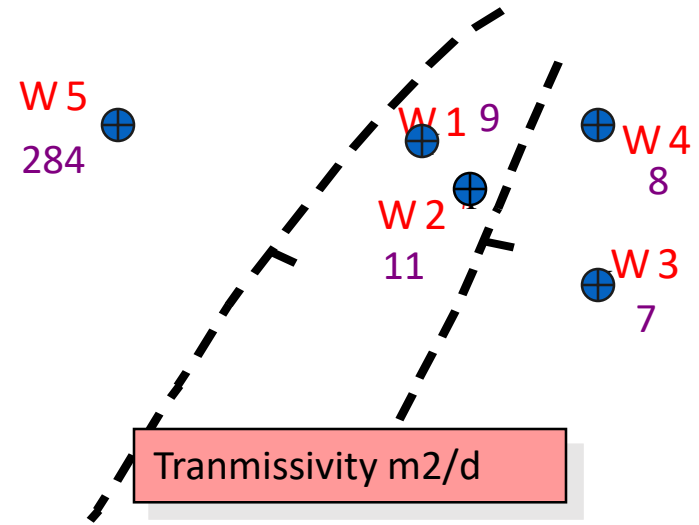
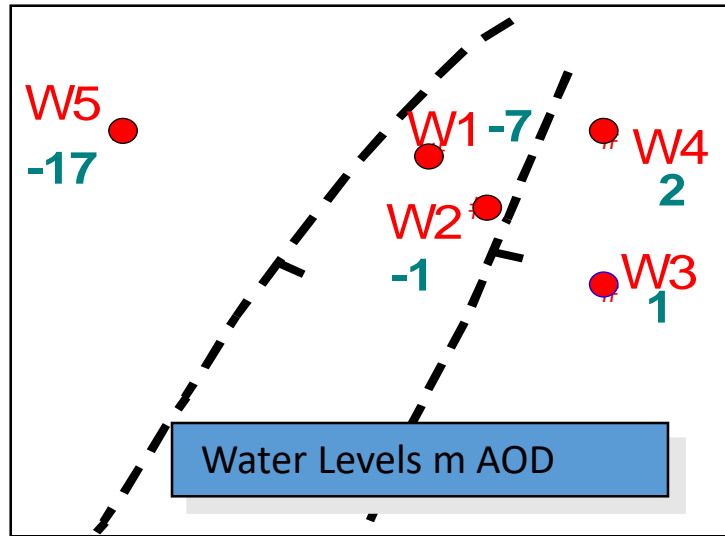
Fiddlers Ferry - Transmissivity (m<sup>2</sup>/d)



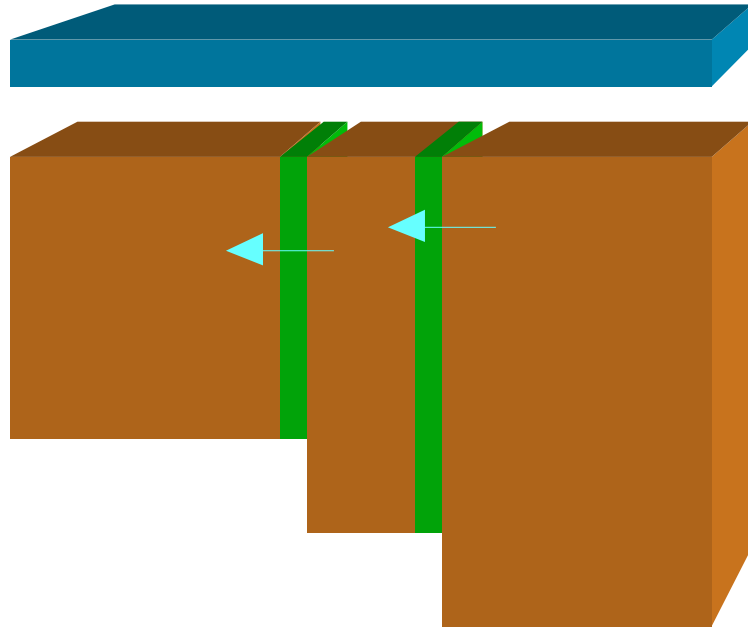
Fiddlers Ferry - Structure (base Wilmslow Sst)

# Fiddlers Ferry - Major Ion Chemistry





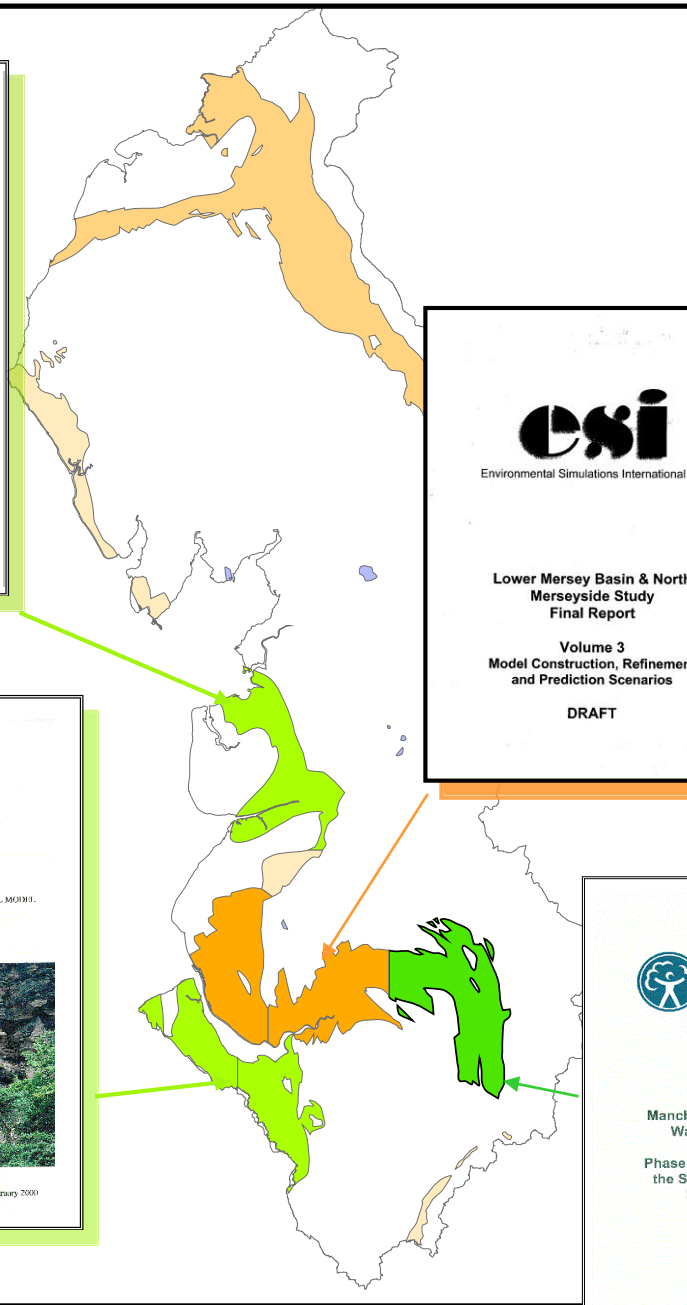
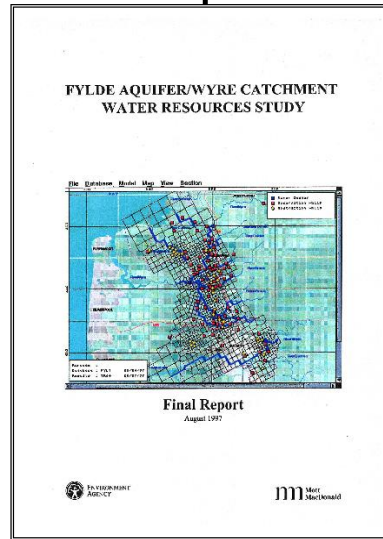
# Fiddlers Ferry - summary



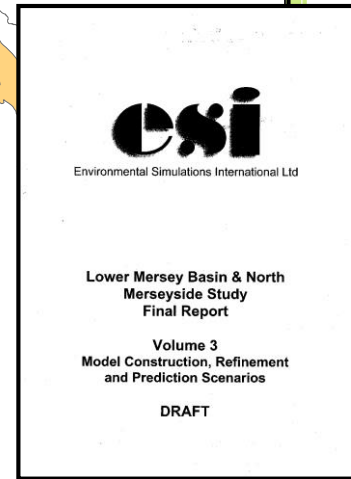
Recent groundwater resources  
investigations (modelling studies)

# NW Region Groundwater Resource Investigations

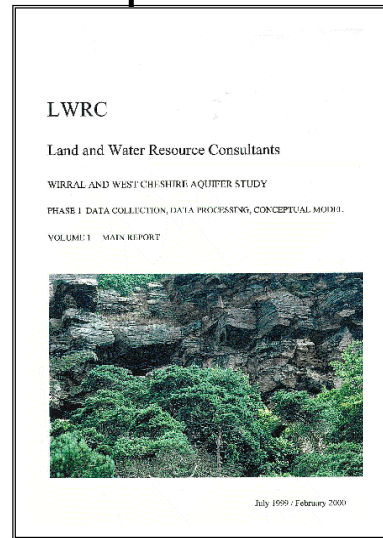
1997



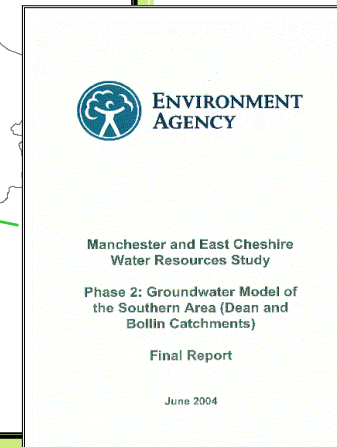
2007



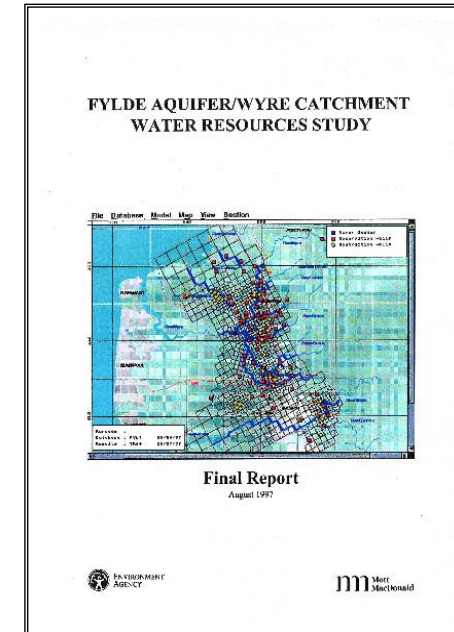
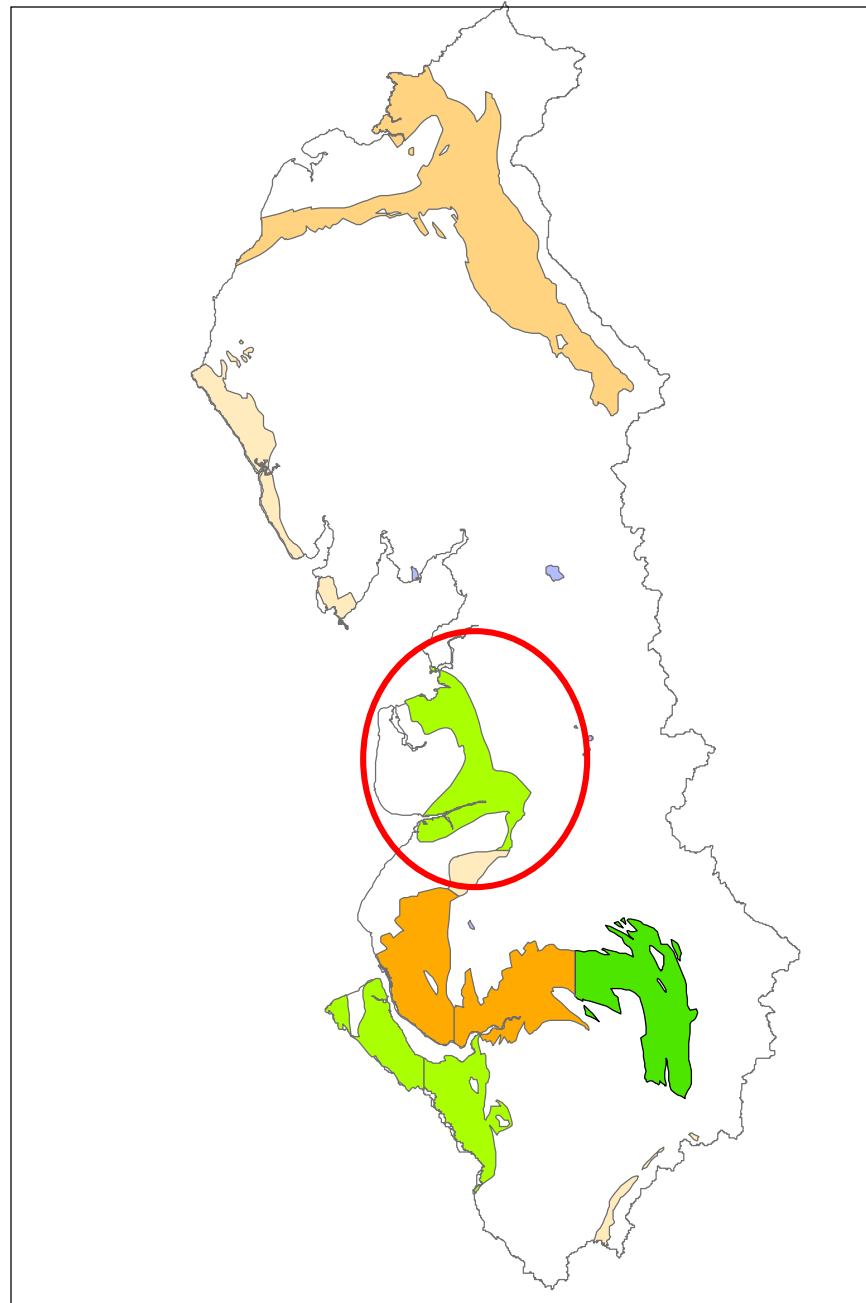
2000



2004

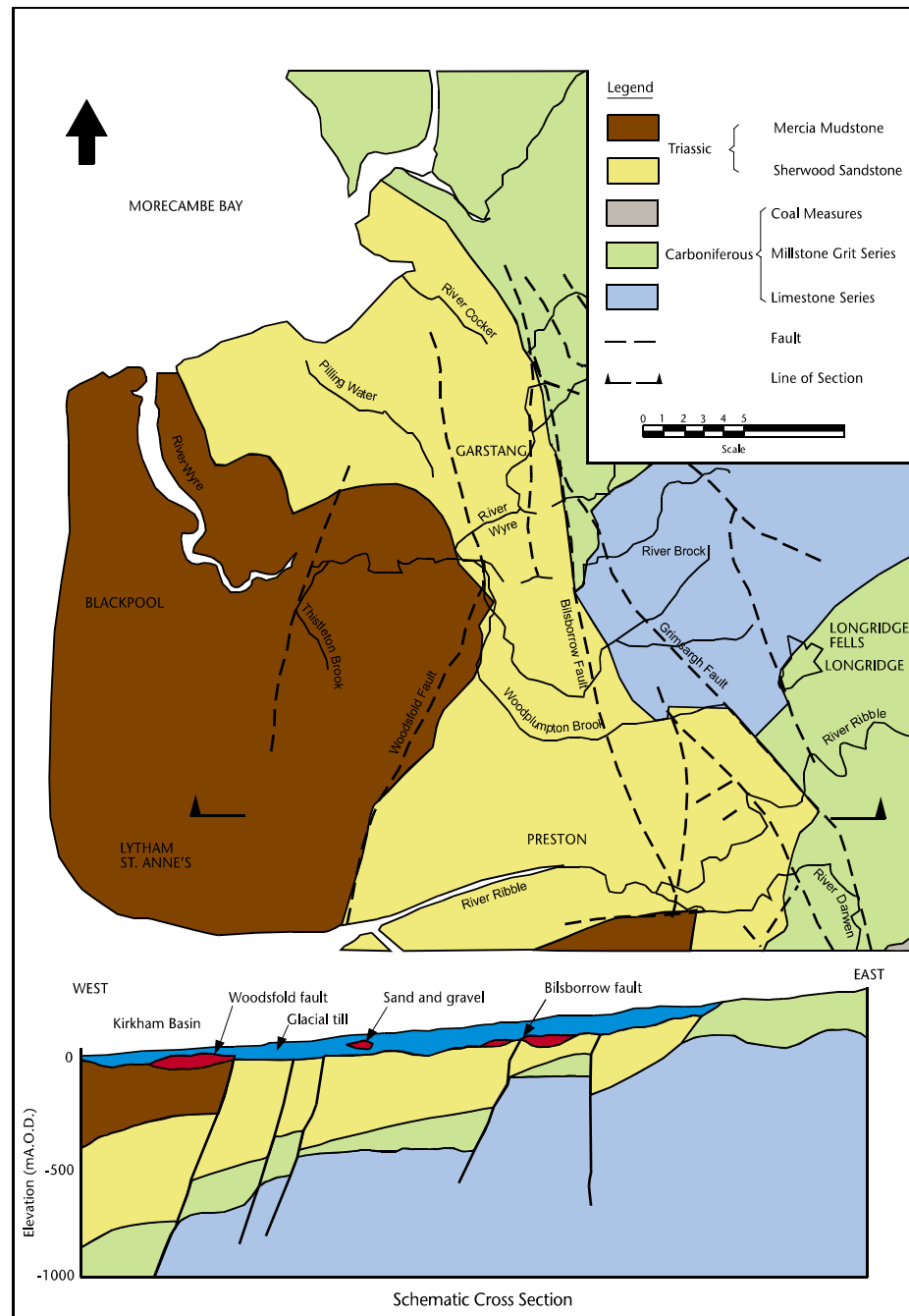


# Fylde Aquifer



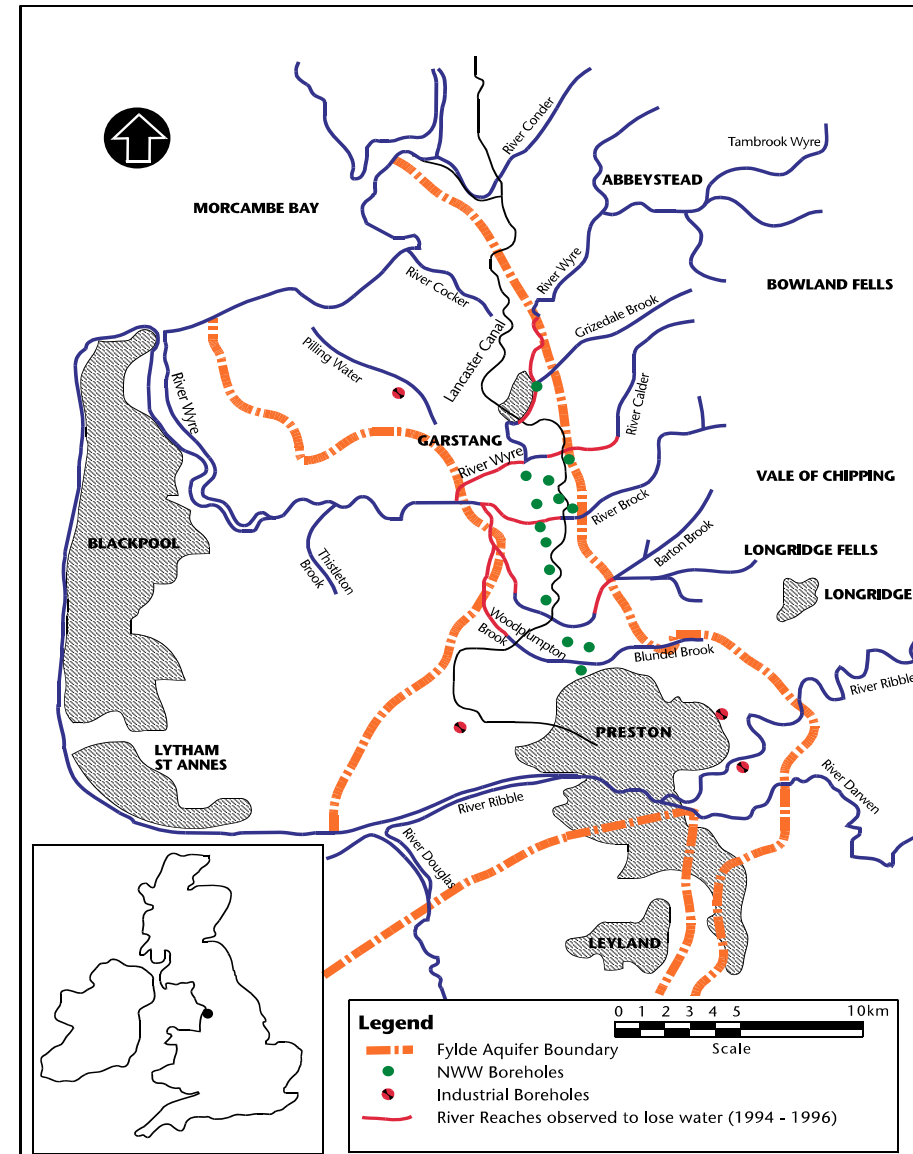


# Fylde Aquifer Geology

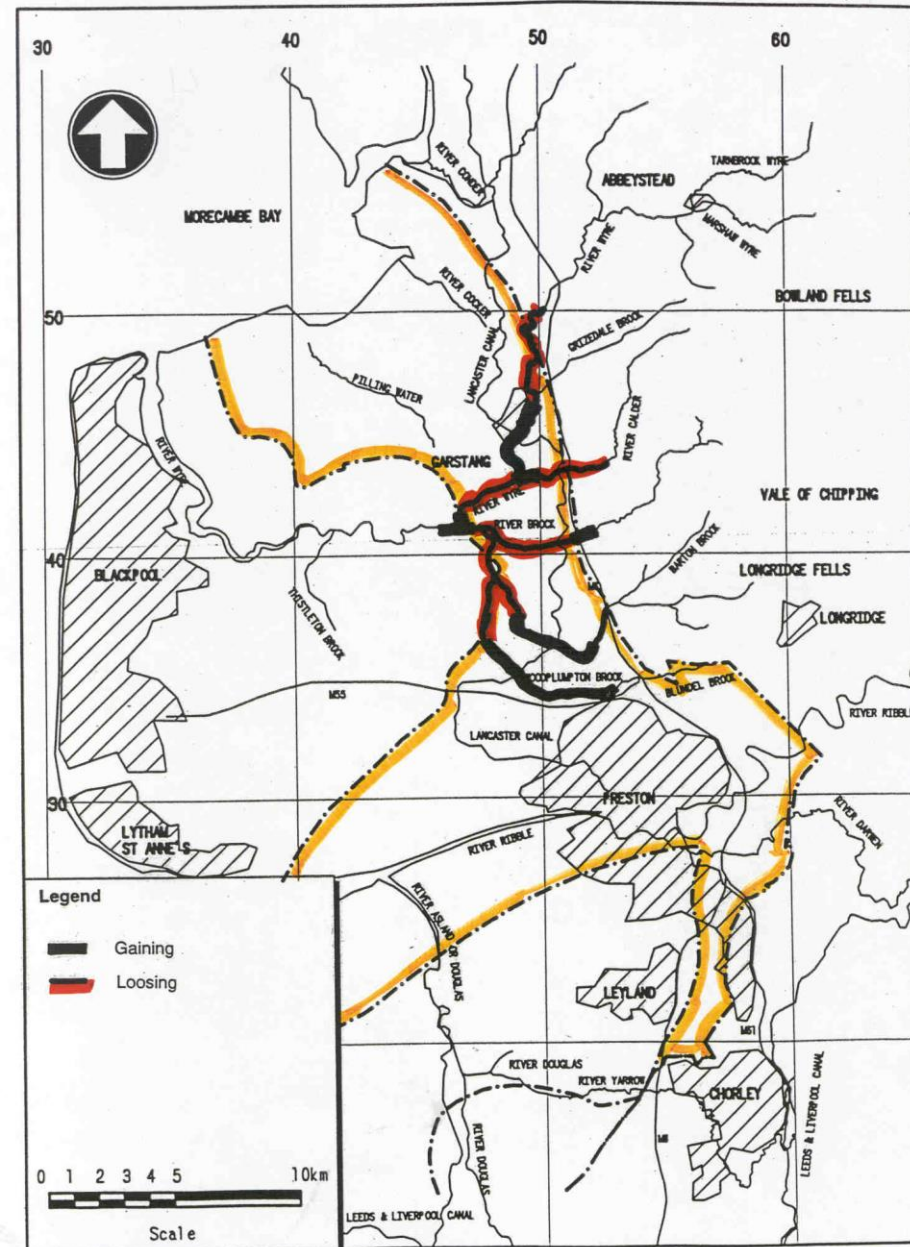


# Fylde Aquifer

- Abstractions
  - Industrial
  - PWS
- LCUS
  - seasonal abstraction
  - detailed investigations
  - 30 years operation



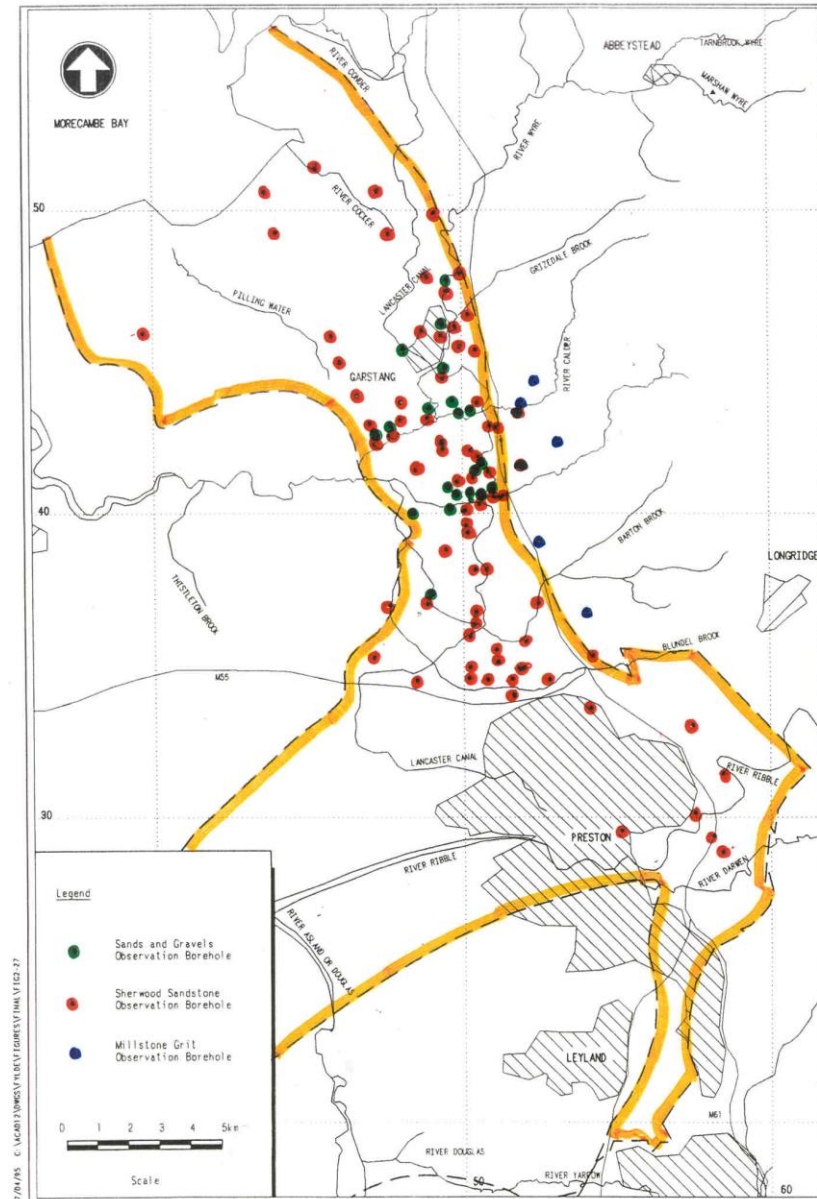
# Gaining/Losing River Reaches - July 1994



# Fylde Aquifer/Wyre Catchment Water Resources Study

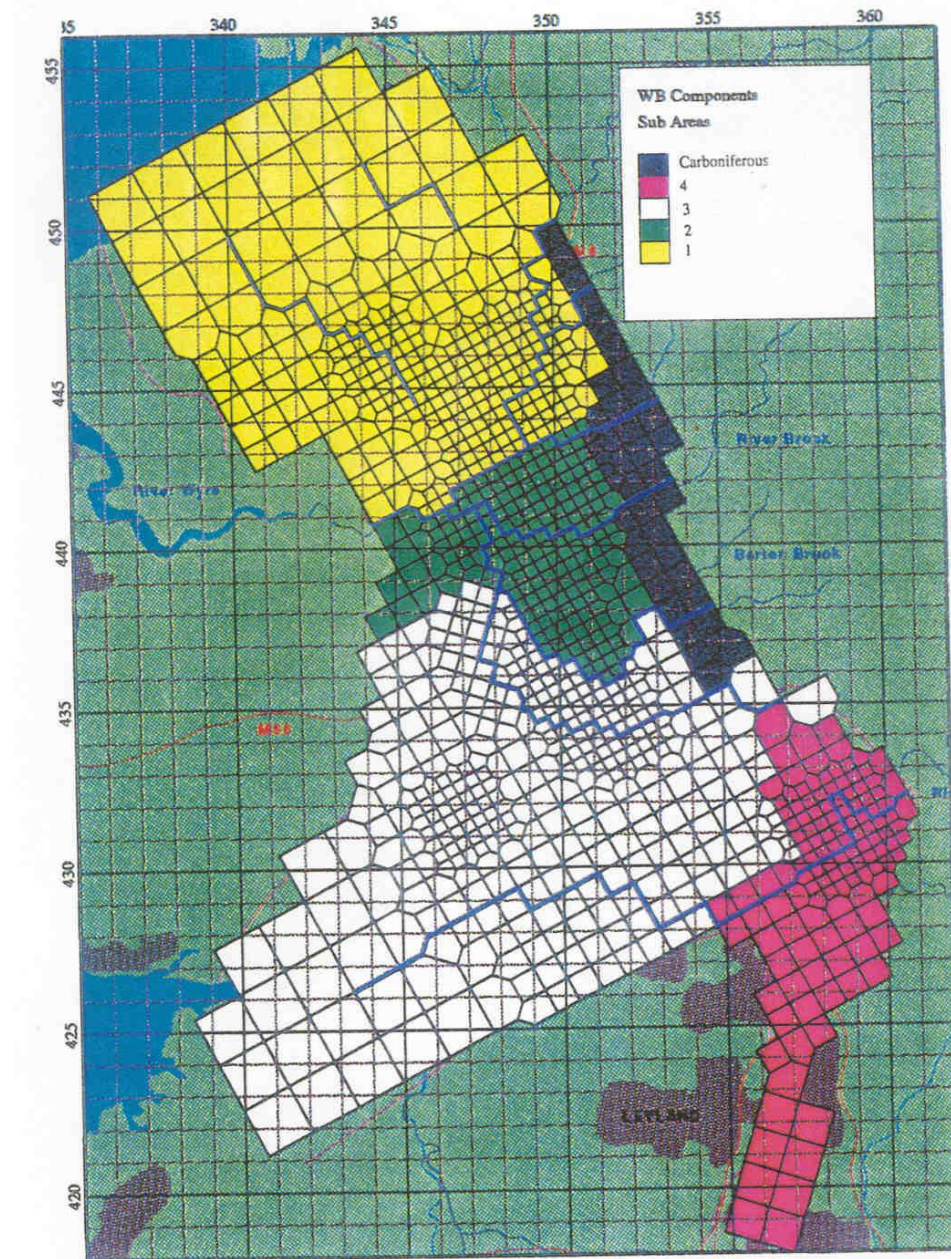
- Why?
  - sustainability of licence
  - impact on rivers
- How:
  - data review, conceptual & numerical model
- Who?
  - EA, United Utilities, Mott MacDonald, Ken Rushton

# Location of Observation Boreholes

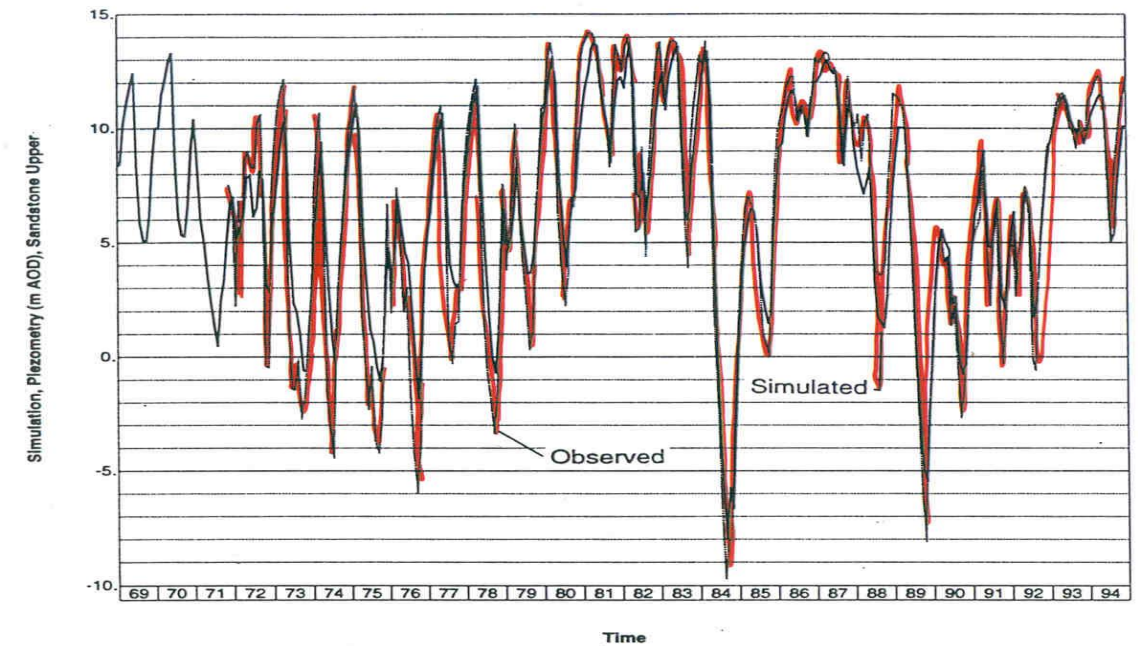
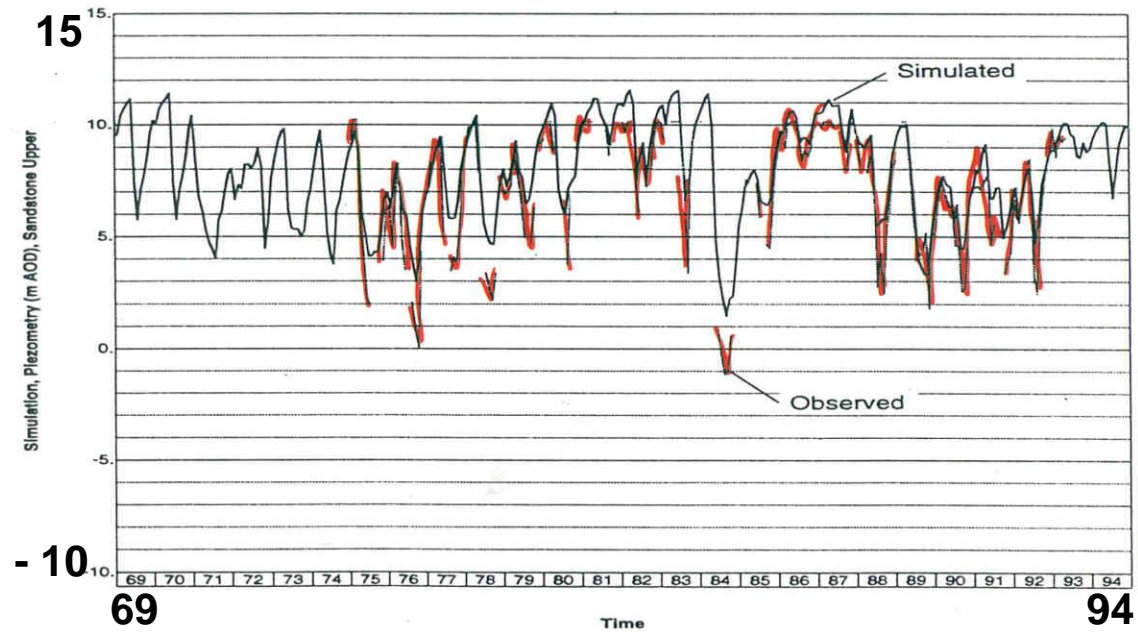
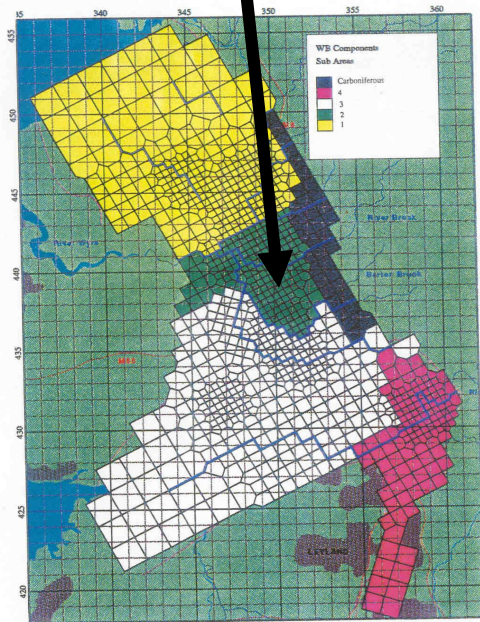




# Sub Areas of the Model

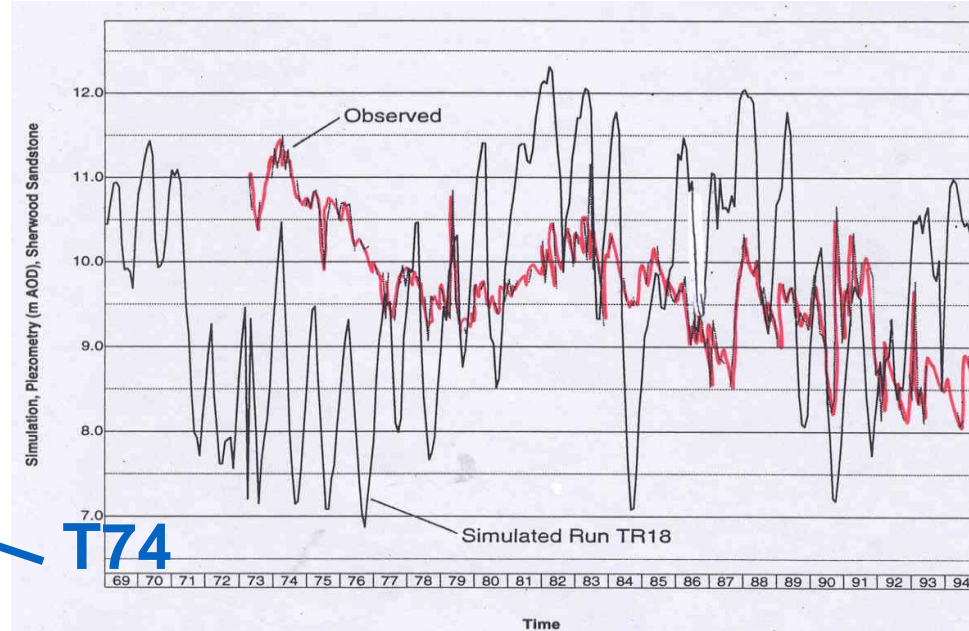
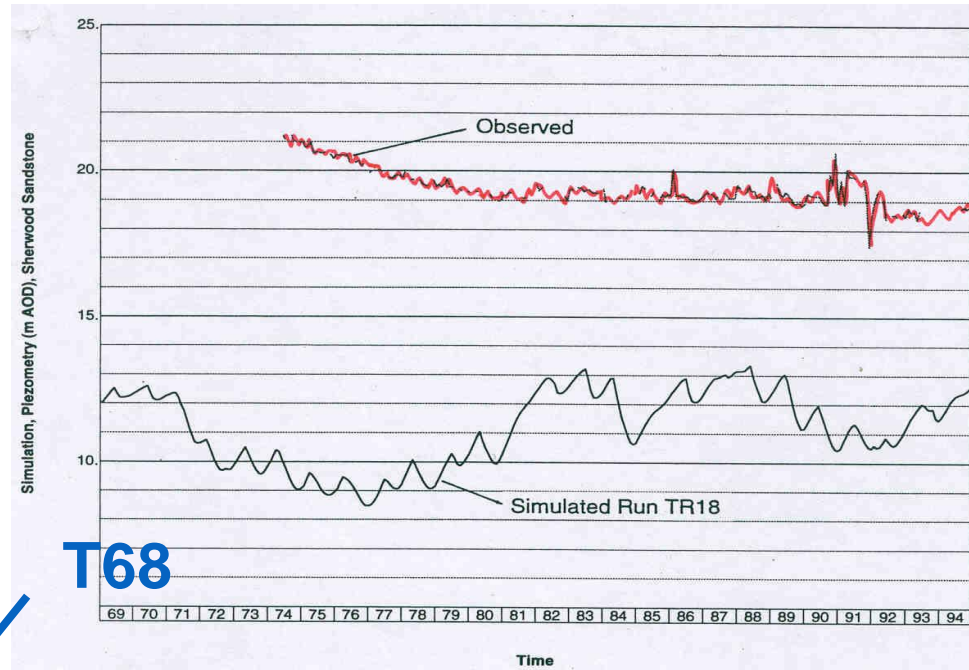
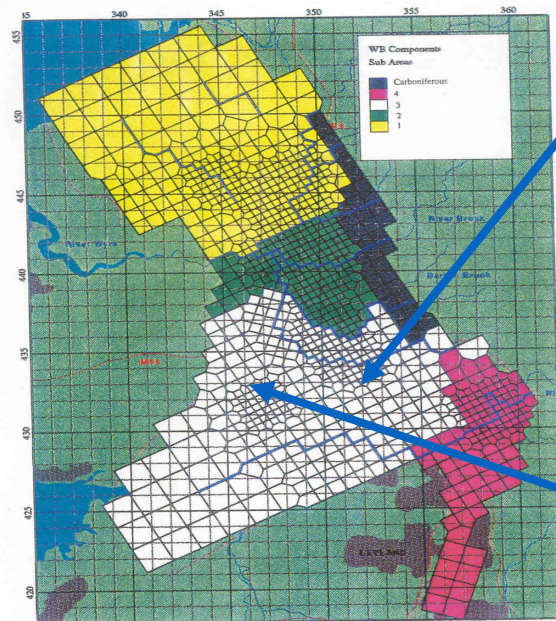


# Calibration: Simulated Groundwater Levels in the Central Area



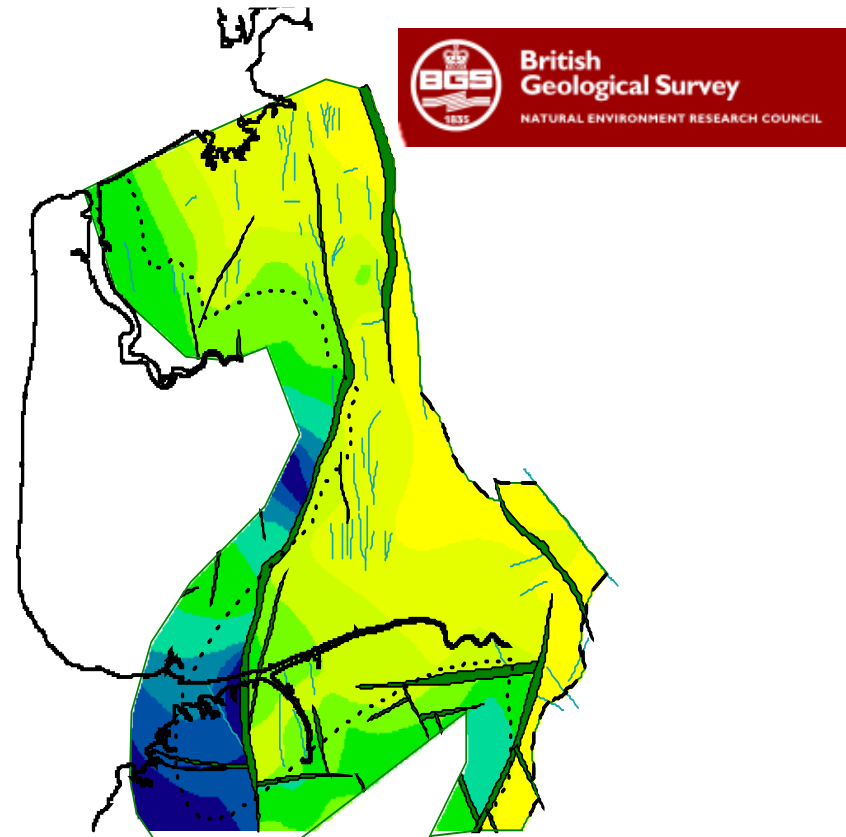


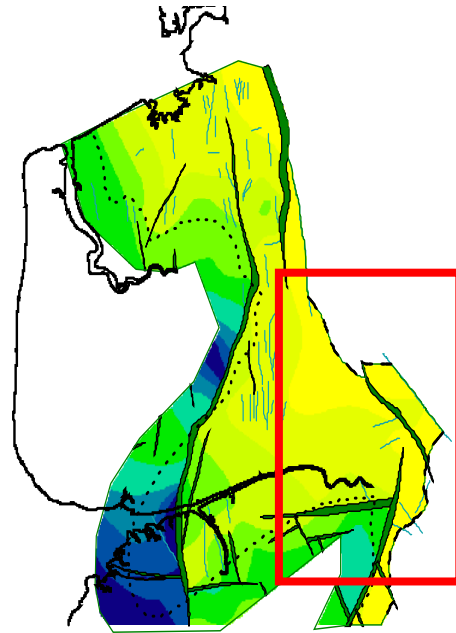
# Early Simulations - Southern area



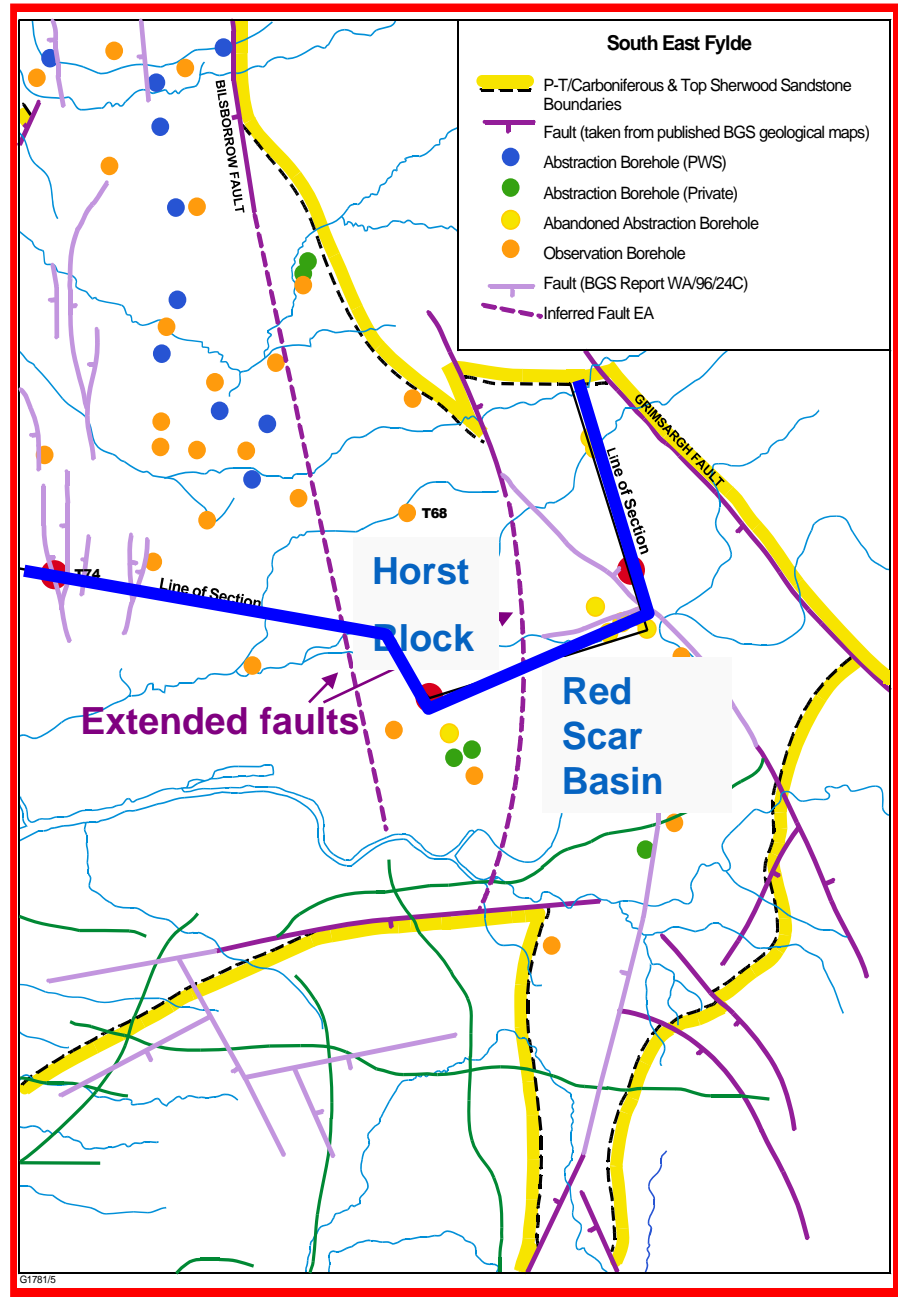
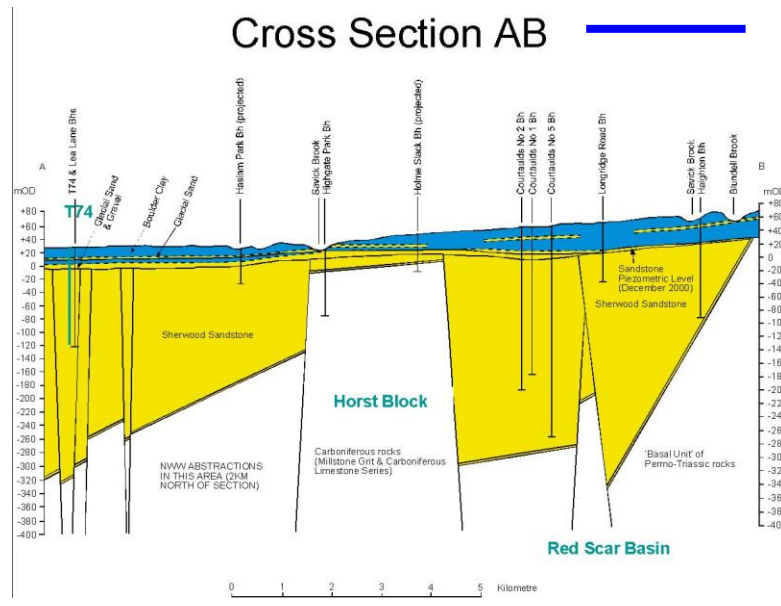
# Fylde Aquifer/Wyre Catchment Water Resources Study

- Reconceptualisation
  - time for a rethink!:
- Structural controls?

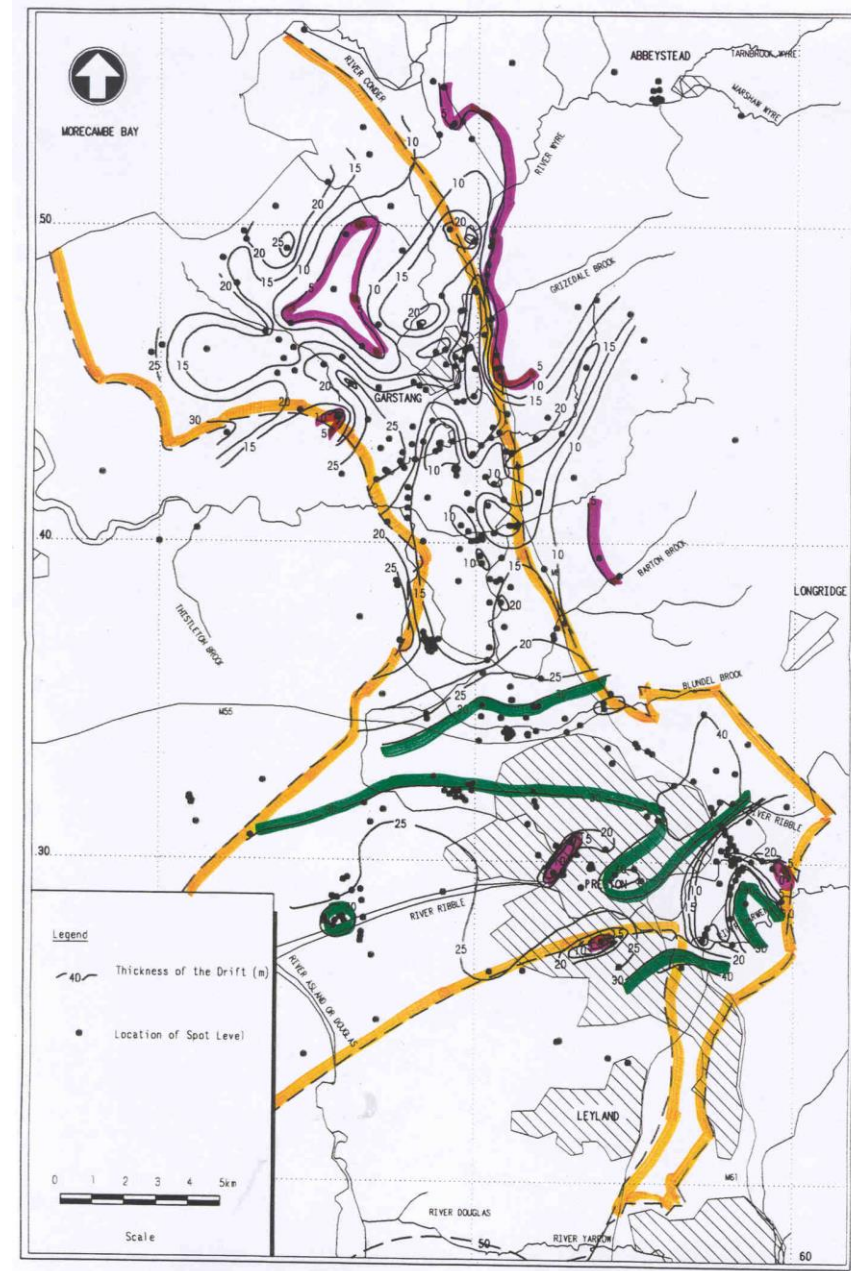




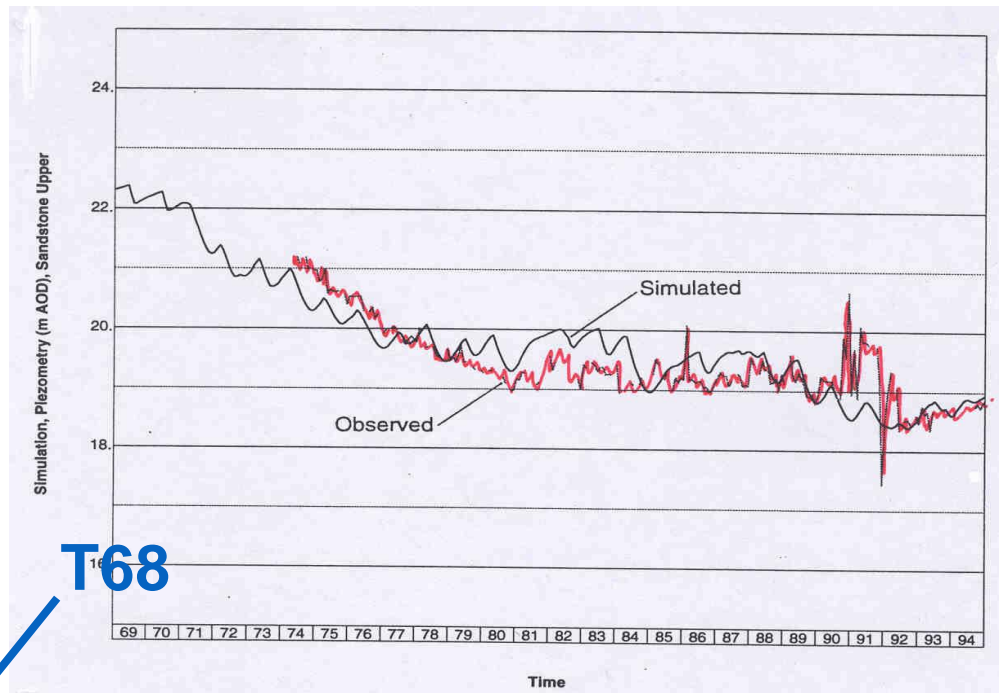
Cross Section AB



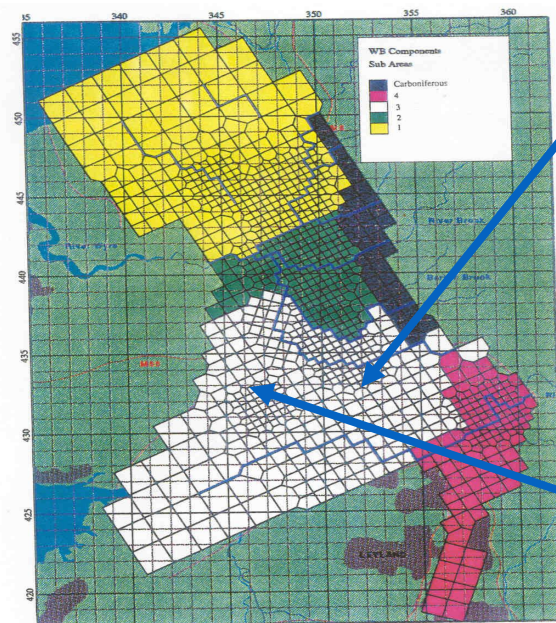
# Thickness of Drift



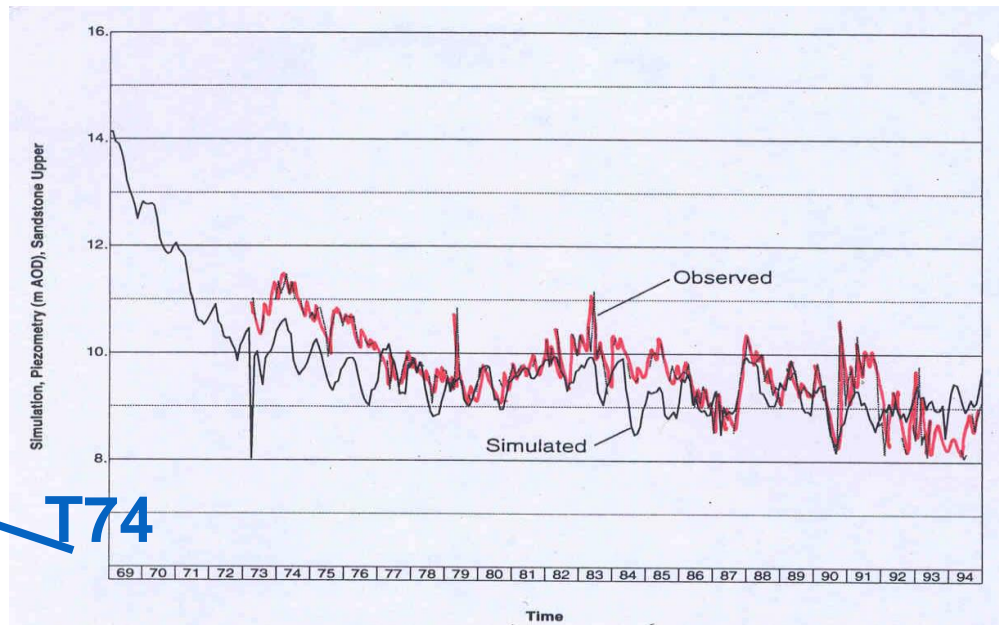
# Final Calibration: - Southern area



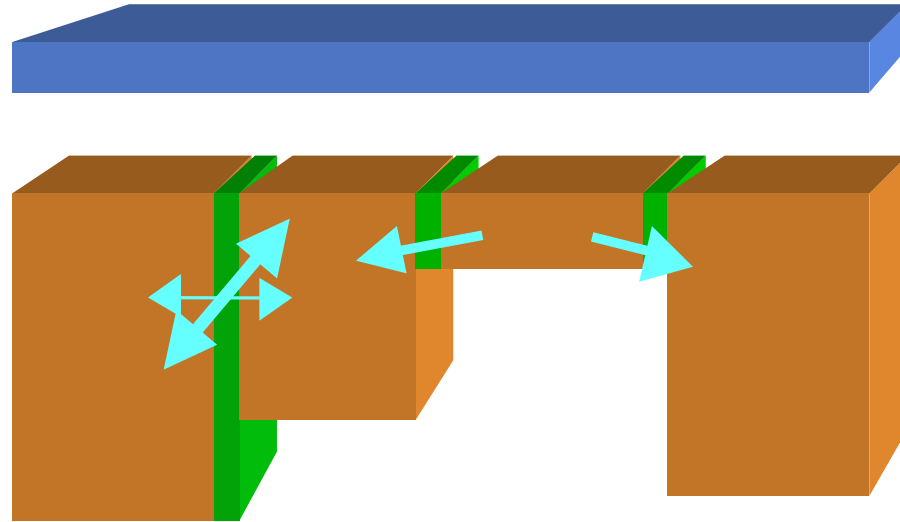
T68



T74



# Fylde - Summary:



# the importance of the conceptual model

## the Fylde

